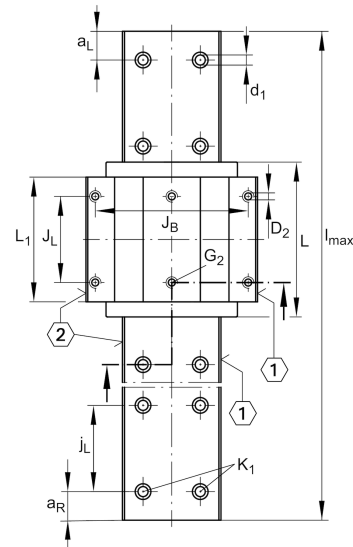
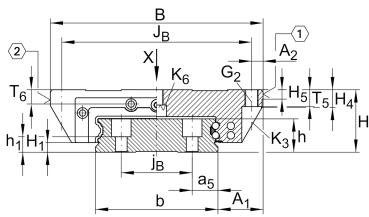


### KWVE15-W [↗](#)

#### Recirculating ball bearing carriage

Carriages KWVE..-W, wide carriage for linear recirculating ball bearing and guideway assembly

## Technical information



### Your current product variant

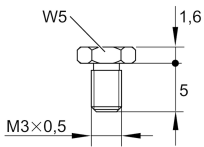
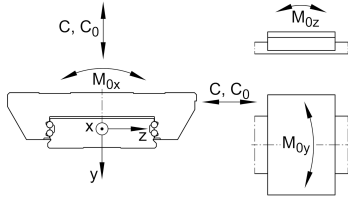
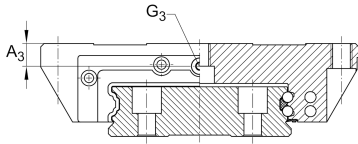
Size	15	
Version	Version	
Carriage design	W	Wide carriage and wide guideway

### Main Dimensions & Performance Data

H	21 mm	Height system
B	68 mm	Width carriage
L	55,6 mm	Overall length carriage
C	7.200 N	Dynamic load rating
C <sub>0</sub>	14.500 N	Static load rating
M <sub>0x</sub>	332 Nm	Static moment rating about X axis
M <sub>0y</sub>	100 Nm	Static moment rating about Y axis
M <sub>0z</sub>	100 Nm	Static moment rating about Z axis
≈m	0,27 kg	Weight



## Mounting dimensions



S16

A <sub>1</sub>	15,5 mm	Distance from locating edge on carriage to locating edge on guideway
J <sub>B</sub>	60 mm	
b	37 mm	Width rail
A <sub>2</sub>	4 mm	Distance from locating edge to hole
L <sub>1</sub>	39,8 mm	
J <sub>L</sub>	29 mm	
H <sub>1</sub>	2,1 mm	Free space, system dimension
H <sub>4</sub>	7,7 mm	
H <sub>5</sub>	4,5 mm	
T <sub>5</sub>	7 mm	Thread depth
T <sub>6</sub>	4,8 mm	
G <sub>2</sub>	M5	Fixing screws above (DIN ISO 4762-12.9)
G <sub>2 M<sub>A</sub></sub>	5,8 Nm	Maximum tightening torque
K <sub>3</sub>	M4	Fixing screws below (DIN ISO 4762-12.9)
K <sub>3 M<sub>A</sub></sub>	5 Nm	Maximum tightening torque
K <sub>6</sub>	M4	Fixing screws below (DIN 7984-8.8)
K <sub>6 M<sub>A</sub></sub>	2 Nm	Maximum tightening torque
D <sub>2</sub>	4,5 mm	
A <sub>3</sub>	3,6 mm	Position lubrication connector
G <sub>3</sub>	M3	Lubrication connector
t <sub>G<sub>3</sub></sub>	4 mm	Maximum permissible screw depth for lubrication connectors

## Additional information

VMKB_065	KWVE	Material name
----------	------	---------------