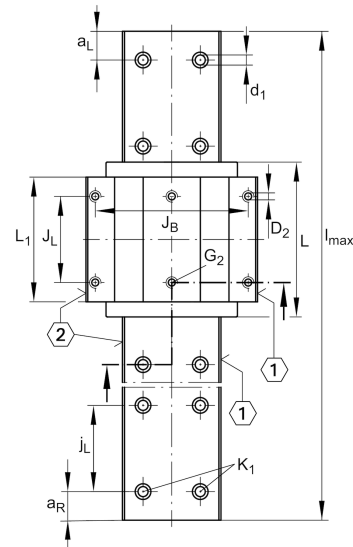
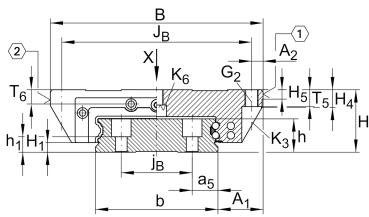


KWVE30-W [↗](#)

Recirculating ball bearing carriage

Carriages KWVE..-W, wide carriage for linear recirculating ball bearing and guideway assembly

Technical information



Your current product variant

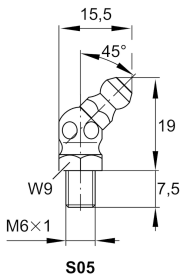
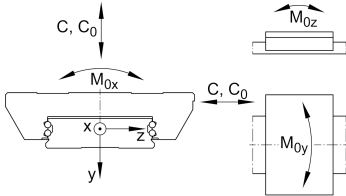
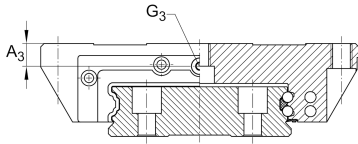
Size code	30	
Version	Version	
Carriage design	W	Wide carriage and wide guideway

Main Dimensions & Performance Data

H	42 mm	Height system
B	142 mm	Width carriage
L	97,5 mm	Overall length carriage
C	27.500 N	Dynamic load rating
C ₀	55.000 N	Static load rating
M _{0x}	2.660 Nm	Static moment rating about X axis
M _{0y}	700 Nm	Static moment rating about Y axis
M _{0z}	700 Nm	Static moment rating about Z axis
≈m	1,95 kg	Weight



Mounting dimensions



A ₁	31 mm	Distance from locating edge on carriage to locating edge on guideway
J _B	124 mm	
b	80 mm	Width rail
A ₂	9 mm	Distance from locating edge to hole
L ₁	72 mm	
J _L	52 mm	
H ₁	6 mm	Free space, system dimension
H ₄	13,8 mm	
H ₅	6 mm	
T ₅	12 mm	Thread depth
T ₆	12 mm	
G ₂	M10	Fixing screws above (DIN ISO 4762-12.9)
G _{2 M_A}	41 Nm	Maximum tightening torque
K ₃	M8	Fixing screws below (DIN ISO 4762-12.9)
K _{3 M_A}	41 Nm	Maximum tightening torque
K ₆	M8	Fixing screws below (DIN 7984-8.8)
K _{6 M_A}	12 Nm	Maximum tightening torque
D ₂	8,6 mm	
A ₃	11,25 mm	Position lubrication connector
G ₃	M6	Lubrication connector
t _{G₃}	6 mm	Maximum permissible screw depth for lubrication connectors

Additional information

VMKB_065	KWVE	Material name
----------	------	---------------