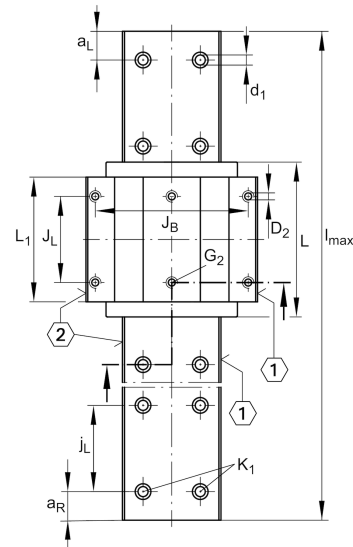
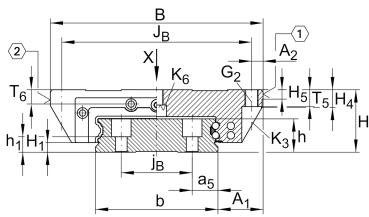


KWVE25-WL

Recirculating ball bearing carriage

Carriages KWVE..-WL, wide, long carriage for linear recirculating ball bearing and guideway assembly

Technical information



Your current product variant

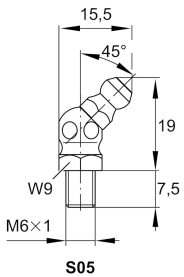
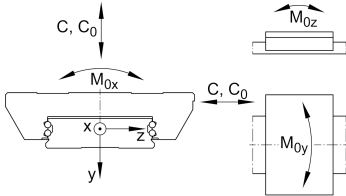
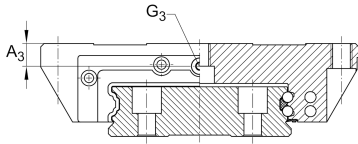
Size code	25	
Version	Version	
Carriage design	WL	Wide, long carriage and wide guideway

Main Dimensions & Performance Data

H	35 mm	Height system
B	120 mm	Width carriage
L	107,5 mm	Overall length carriage
C	23.400 N	Dynamic load rating
C ₀	54.000 N	Static load rating
M _{0x}	2.225 Nm	Static moment rating about X axis
M _{0y}	825 Nm	Static moment rating about Y axis
M _{0z}	825 Nm	Static moment rating about Z axis
m	1,46 kg	Weight



Mounting dimensions



A ₁	25,5 mm	Distance from locating edge on carriage to locating edge on guideway
J _B	107 mm	
b	69 mm	Width rail
A ₂	6,5 mm	Distance from locating edge to hole
L ₁	86,5 mm	
J _L	60 mm	
H ₁	5,2 mm	Free space, system dimension
H ₄	9,9 mm	
H ₅	5 mm	
T ₅	10 mm	Thread depth
T ₆	10 mm	
G ₂	M8	Fixing screws above (DIN ISO 4762-12.9)
G _{2 M_A}	41 Nm	Maximum tightening torque
K ₃	M6	Fixing screws below (DIN ISO 4762-12.9)
K _{3 M_A}	17 Nm	Maximum tightening torque
K ₆	M6	Fixing screws below (DIN ISO 4762-12.9)
K _{6 M_A}	17 Nm	Maximum tightening torque
D ₂	6,7 mm	
A ₃	10 mm	Position lubrication connector
G ₃	M6	Lubrication connector
t _{G₃}	6 mm	Maximum permissible screw depth for lubrication connectors

Additional information

VMKB_065	KWVE	Material name
----------	------	---------------