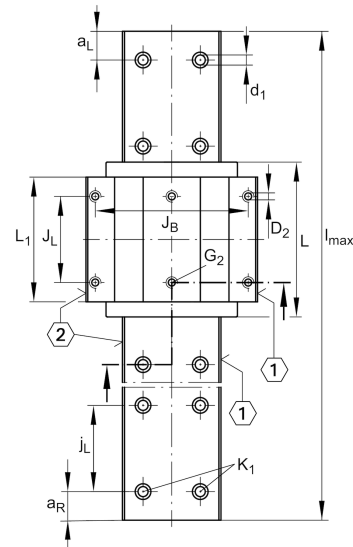
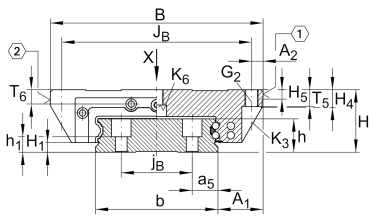


### KWVE35-WL

#### Recirculating ball bearing carriage

Carriages KWVE..-WL, wide, long carriage for linear recirculating ball bearing and guideway assembly

## Technical information



### Your current product variant

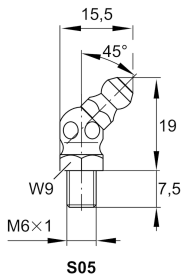
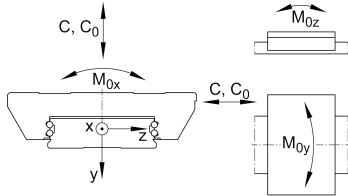
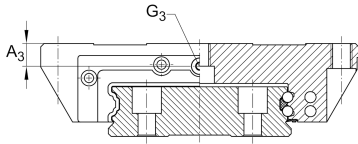
Size Code	35	
Version	Version	
Carriage design	WL	Wide, long carriage and wide guideway

### Main Dimensions & Performance Data

H	50 mm	Height system
B	162 mm	Width carriage
L	140,2 mm	Overall length carriage
C	47.500 N	Dynamic load rating
C <sub>0</sub>	100.000 N	Static load rating
M <sub>0x</sub>	5.550 Nm	Static moment rating about X axis
M <sub>0y</sub>	1.890 Nm	Static moment rating about Y axis
M <sub>0z</sub>	1.890 Nm	Static moment rating about Z axis
≈m	4,11 kg	Weight



## Mounting dimensions



A <sub>1</sub>	36 mm	Distance from locating edge on carriage to locating edge on guideway
J <sub>B</sub>	144 mm	
b	90 mm	Width rail
A <sub>2</sub>	9 mm	Distance from locating edge to hole
L <sub>1</sub>	109,8 mm	
J <sub>L</sub>	80 mm	
H <sub>1</sub>	6,8 mm	Free space, system dimension
H <sub>4</sub>	16,3 mm	
H <sub>5</sub>	6,5 mm	
T <sub>5</sub>	13 mm	Thread depth
T <sub>6</sub>	13 mm	
G <sub>2</sub>	M10	Fixing screws above (DIN ISO 4762-12.9)
G <sub>2 M<sub>A</sub></sub>	41 Nm	Maximum tightening torque
K <sub>3</sub>	M8	Fixing screws below (DIN ISO 4762-12.9)
K <sub>3 M<sub>A</sub></sub>	41 Nm	Maximum tightening torque
K <sub>6</sub>	M8	Fixing screws below (DIN ISO 4762-12.9)
K <sub>6 M<sub>A</sub></sub>	41 Nm	Maximum tightening torque
D <sub>2</sub>	8,6 mm	
A <sub>3</sub>	14,3 mm	Position lubrication connector
G <sub>3</sub>	M6	Lubrication connector
t <sub>G<sub>3</sub></sub>	6 mm	Maximum permissible screw depth for lubrication connectors

## Additional information

VMKB_065	KWVE	Material name
----------	------	---------------