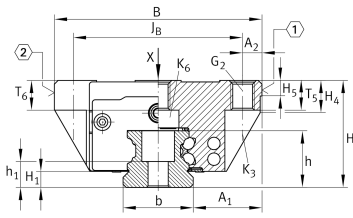




### KWVE20-B [↗](#)

Recirculating ball bearing carriage

## Technical information

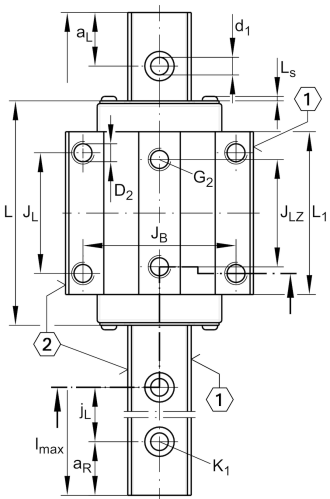


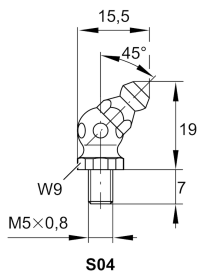
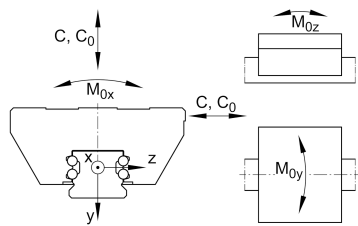
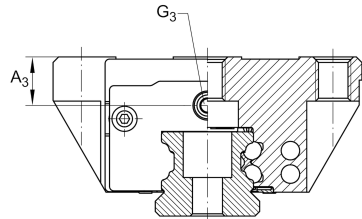
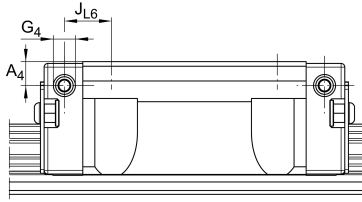
### Your current product variant

Size code	20
Version	B
Carriage design	Standard <span style="margin-left: 100px;">Standard carriage</span>

### Main Dimensions & Performance Data

H	30 mm	Height system
B	63 mm	Width carriage
L	71,4 mm	Overall length carriage
C	13.100 N	Dynamic load rating
C <sub>0</sub>	27.000 N	Static load rating
M <sub>0x</sub>	332 Nm	Static moment rating about X axis
M <sub>0y</sub>	240 Nm	Static moment rating about Y axis
M <sub>0z</sub>	240 Nm	Static moment rating about Z axis
≈m	0,44 kg	Weight





### Mounting dimensions

A <sub>1</sub>	21,5 mm	Distance from locating edge on carriage to locating edge on guideway
J <sub>B</sub>	53 mm	
b	20 mm	Width rail
A <sub>2</sub>	5 mm	Distance from locating edge to hole
L <sub>1</sub>	50,4 mm	
L <sub>S</sub>	1,3 mm	
J <sub>L</sub>	40 mm	
J <sub>LZ</sub>	35 mm	
H <sub>1</sub>	4,5 mm	Free space, system dimension
H <sub>4</sub>	11 mm	
H <sub>5</sub>	5,25 mm	
T <sub>5</sub>	10 mm	Thread depth
T <sub>6</sub>	7,5 mm	
G <sub>2</sub>	M6	Fixing screws above (DIN ISO 4762-12.9)
G <sub>2 M<sub>A</sub></sub>	10 Nm	Maximum tightening torque
K <sub>3</sub>	M5	Fixing screws below (DIN ISO 4762-12.9)
K <sub>3 M<sub>A</sub></sub>	10 Nm	Maximum tightening torque
K <sub>6</sub>	M5	Fixing screws below (DIN ISO 4762-12.9)
K <sub>6 M<sub>A</sub></sub>	10 Nm	Maximum tightening torque
D <sub>2</sub>	5,5 mm	
A <sub>3</sub>	7,7 mm	Position lubrication connector
G <sub>3</sub>	M5	Lubrication connector
t <sub>G<sub>3</sub></sub>	7 mm	Maximum permissible screw depth for lubrication connectors
A <sub>4</sub>	4,6 mm	Position lubrication connector
G <sub>4</sub>	M5	Lubrication connector
t <sub>G<sub>4</sub></sub>	5,5 mm	Maximum permissible screw depth for lubrication connectors
J <sub>L6</sub>	9,4 mm	Position lubrication connector



View product details on medias

19.06.2026, 21:39:47 UTC

SCHAEFFLER

### Additional information

---

VMKB\_065

KWVE

Material name