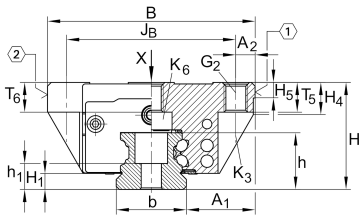




### KWVE45-B [↗](#)

Recirculating ball bearing carriage

## Technical information

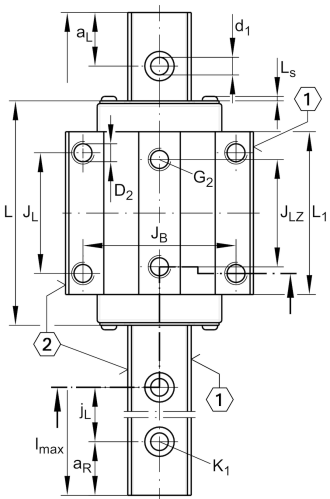


### Your current product variant

Size Code	45	
Version	B	
Carriage design	Standard	Standard carriage

### Main Dimensions & Performance Data

H	60 mm	Height system
B	120 mm	Width carriage
L	140,6 mm	Overall length carriage
C	69.000 N	Dynamic load rating
C <sub>0</sub>	141.000 N	Static load rating
M <sub>0x</sub>	3.610 Nm	Static moment rating about X axis
M <sub>0y</sub>	2.485 Nm	Static moment rating about Y axis
M <sub>0z</sub>	2.485 Nm	Static moment rating about Z axis
≈m	3,3 kg	Weight





### Mounting dimensions

A <sub>1</sub>	37,5 mm	Distance from locating edge on carriage to locating edge on guideway
J <sub>B</sub>	100 mm	
b	45 mm	Width rail
A <sub>2</sub>	10 mm	Distance from locating edge to hole
L <sub>1</sub>	102,5 mm	
L <sub>S</sub>	2,2 mm	
J <sub>L</sub>	80 mm	
J <sub>LZ</sub>	60 mm	
H <sub>1</sub>	9,7 mm	Free space, system dimension
H <sub>4</sub>	19,9 mm	
H <sub>5</sub>	9,25 mm	
T <sub>5</sub>	15 mm	Thread depth
T <sub>6</sub>	15 mm	
G <sub>2</sub>	M12	Fixing screws above (DIN ISO 4762-12.9)
G <sub>2</sub> M <sub>A</sub>	83 Nm	Maximum tightening torque
K <sub>3</sub>	M10	Fixing screws below (DIN ISO 4762-12.9)
K <sub>3</sub> M <sub>A</sub>	83 Nm	Maximum tightening torque
K <sub>6</sub>	M10	Fixing screws below (DIN ISO 4762-12.9)
K <sub>6</sub> M <sub>A</sub>	83 Nm	Maximum tightening torque
D <sub>2</sub>	10,6 mm	
A <sub>3</sub>	16,5 mm	Position lubrication connector
G <sub>3</sub>	M6	Lubrication connector
t <sub>G 3</sub>	7 mm	Maximum permissible screw depth for lubrication connectors
A <sub>4</sub>	16,5 mm	Position lubrication connector
G <sub>4</sub>	M6	Lubrication connector
t <sub>G 4</sub>	7 mm	Maximum permissible screw depth for lubrication connectors
J <sub>L6</sub>	19,25 mm	Position lubrication connector



View product details on medias

01.05.2026, 15:49:17 UTC

**SCHAEFFLER**

### Additional information

---

VMKB\_065

KWVE

Material name