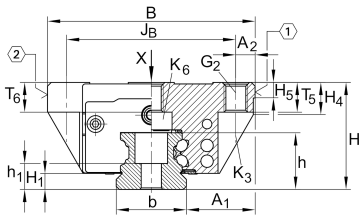




### KWVE55-B [↗](#)

Recirculating ball bearing carriage

## Technical information

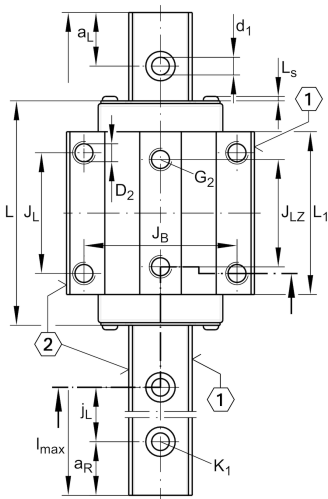


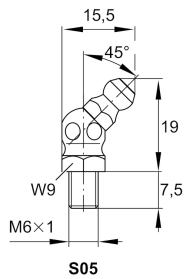
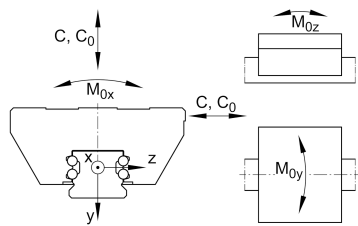
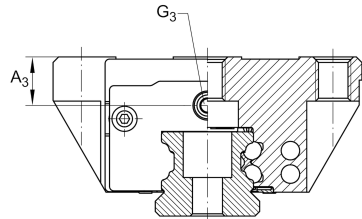
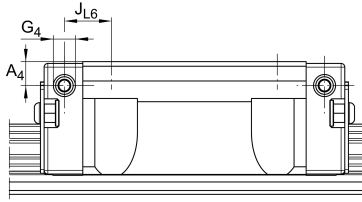
### Your current product variant

Size code	55
Version	B
Carriage design	Standard      Standard carriage

### Main Dimensions & Performance Data

H	70 mm	Height system
B	140 mm	Width carriage
L	173,6 mm	Overall length carriage
C	104.000 N	Dynamic load rating
C <sub>0</sub>	213.000 N	Static load rating
M <sub>0x</sub>	5.600 Nm	Static moment rating about X axis
M <sub>0y</sub>	2.730 Nm	Static moment rating about Y axis
M <sub>0z</sub>	2.730 Nm	Static moment rating about Z axis
≈m	5,5 kg	Weight





### Mounting dimensions

A <sub>1</sub>	43,5 mm	Distance from locating edge on carriage to locating edge on guideway
J <sub>B</sub>	116 mm	
b	53 mm	Width rail
A <sub>2</sub>	12 mm	Distance from locating edge to hole
L <sub>1</sub>	132 mm	
L <sub>S</sub>	2,2 mm	
J <sub>L</sub>	95 mm	
J <sub>LZ</sub>	70 mm	
H <sub>1</sub>	13,5 mm	Free space, system dimension
H <sub>4</sub>	22,7 mm	
H <sub>5</sub>	11,25 mm	
T <sub>5</sub>	21 mm	Thread depth
T <sub>6</sub>	18 mm	
G <sub>2</sub>	M14	Fixing screws above (DIN ISO 4762-12.9)
G <sub>2 M<sub>A</sub></sub>	140 Nm	Maximum tightening torque
K <sub>3</sub>	M12	Fixing screws below (DIN ISO 4762-12.9)
K <sub>3 M<sub>A</sub></sub>	140,6 Nm	Maximum tightening torque
K <sub>6</sub>	M12	Fixing screws below (DIN ISO 4762-12.9)
K <sub>6 M<sub>A</sub></sub>	140 Nm	Maximum tightening torque
D <sub>2</sub>	12,5 mm	
A <sub>3</sub>	15 mm	Position lubrication connector
G <sub>3</sub>	M6	Lubrication connector
t <sub>G<sub>3</sub></sub>	7 mm	Maximum permissible screw depth for lubrication connectors
A <sub>4</sub>	15 mm	Position lubrication connector
G <sub>4</sub>	M6	Lubrication connector
t <sub>G<sub>4</sub></sub>	7 mm	Maximum permissible screw depth for lubrication connectors
J <sub>L6</sub>	30,5 mm	Position lubrication connector



View product details on medias

28.04.2026, 19:34:35 UTC

SCHAEFFLER

### Additional information

---

VMKB\_065

KWVE

Material name