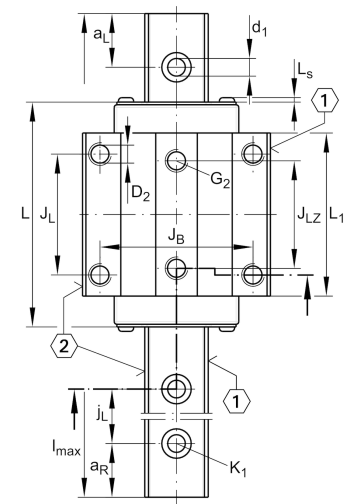
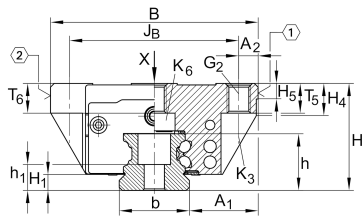


Technical information

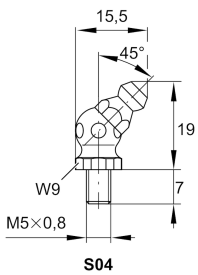


Your current product variant

Size code	20
Version	B
Carriage design	L Long carriage

Main Dimensions & Performance Data

H	30 mm	Height system
B	63 mm	Width carriage
L	88,9 mm	Overall length carriage
C	16.200 N	Dynamic load rating
C ₀	36.500 N	Static load rating
M _{0x}	452 Nm	Static moment rating about X axis
M _{0y}	430 Nm	Static moment rating about Y axis
M _{0z}	430 Nm	Static moment rating about Z axis
≈m	0,59 kg	Weight



Mounting dimensions

A ₁	21,5 mm	Distance from locating edge on carriage to locating edge on guideway
J _B	53 mm	
b	20 mm	Width rail
A ₂	5 mm	Distance from locating edge to hole
L ₁	67,9 mm	
L _S	1,3 mm	
J _L	40 mm	
J _{LZ}	35 mm	
H ₁	4,5 mm	Free space, system dimension
H ₄	11 mm	
H ₅	5,25 mm	
T ₅	10 mm	Thread depth
T ₆	7,5 mm	
G ₂	M6	Fixing screws above (DIN ISO 4762-12.9)
G _{2 M_A}	10 Nm	Maximum tightening torque
K ₃	M5	Fixing screws below (DIN ISO 4762-12.9)
K _{3 M_A}	10 Nm	Maximum tightening torque
K ₆	M5	Fixing screws below (DIN ISO 4762-12.9)
K _{6 M_A}	10 Nm	Maximum tightening torque
D ₂	5,5 mm	
A ₃	7,7 mm	Position lubrication connector
G ₃	M5	Lubrication connector
t _{G₃}	7 mm	Maximum permissible screw depth for lubrication connectors
A ₄	4,6 mm	Position lubrication connector
G ₄	M5	Lubrication connector
t _{G₄}	5,5 mm	Maximum permissible screw depth for lubrication connectors
J _{L6}	18,9 mm	Position lubrication connector



View product details on medias

21.06.2026, 09:26:34 UTC

SCHAEFFLER

Additional information

VMKB_065

KWVE

Material name