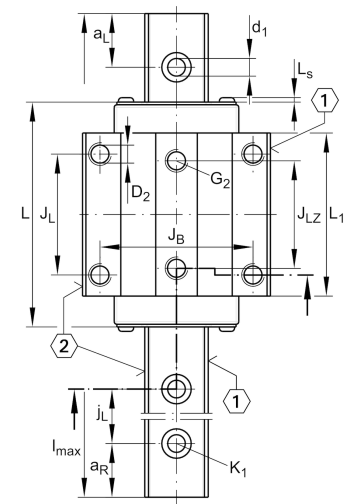
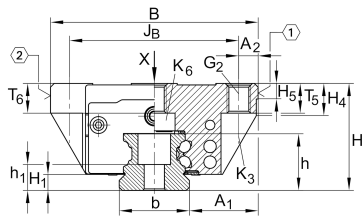


Technical information

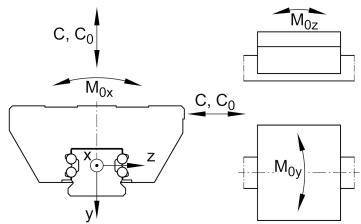


Your current product variant

Size code	25
Version	B
Carriage design	L Long carriage

Main Dimensions & Performance Data

H	36 mm	Height system
B	70 mm	Width carriage
L	109,1 mm	Overall length carriage
C	23.400 N	Dynamic load rating
C ₀	54.000 N	Static load rating
M _{0x}	745 Nm	Static moment rating about X axis
M _{0y}	825 Nm	Static moment rating about Y axis
M _{0z}	825 Nm	Static moment rating about Z axis
≈m	1 kg	Weight



Mounting dimensions

A ₁	23,5 mm	Distance from locating edge on carriage to locating edge on guideway
J _B	57 mm	
b	23 mm	Width rail
A ₂	6,5 mm	Distance from locating edge to hole
L ₁	86,5 mm	
L _S	1,65 mm	
J _L	45 mm	
J _{LZ}	40 mm	
H ₁	5,1 mm	Free space, system dimension
H ₄	10,9 mm	
H ₅	5,25 mm	
T ₅	10 mm	Thread depth
T ₆	10 mm	
G ₂	M8	Fixing screws above (DIN ISO 4762-12.9)
G ₂ M _A	24 Nm	Maximum tightening torque
K ₃	M6	Fixing screws below (DIN ISO 4762-12.9)
K ₃ M _A	17 Nm	Maximum tightening torque
K ₆	M6	Fixing screws below (DIN ISO 4762-12.9)
K ₆ M _A	17 Nm	Maximum tightening torque
D ₂	6,7 mm	
A ₃	11 mm	Position lubrication connector
G ₃	M6	Lubrication connector
t _{G 3}	7 mm	Maximum permissible screw depth for lubrication connectors
A ₄	6,5 mm	Position lubrication connector
G ₄	M6	Lubrication connector
t _{G 4}	7 mm	Maximum permissible screw depth for lubrication connectors
J _{L6}	25,75 mm	Position lubrication connector



View product details on medias

18.06.2026, 16:46:48 UTC

SCHAEFFLER

Additional information

VMKB_065

KWVE

Material name