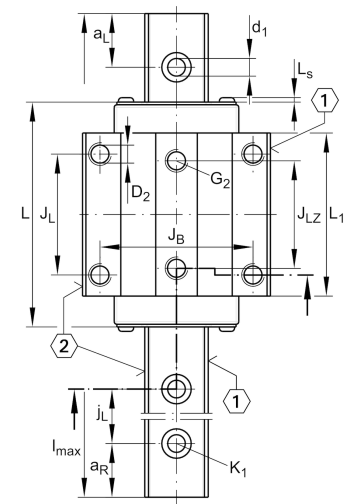
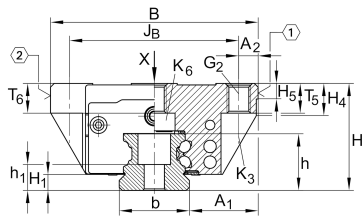


Technical information

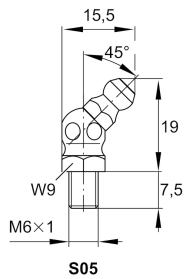
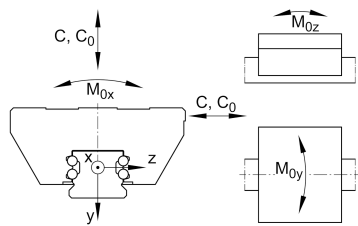
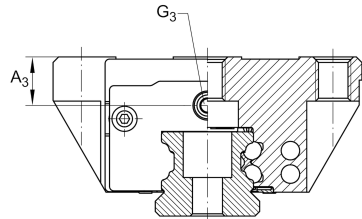
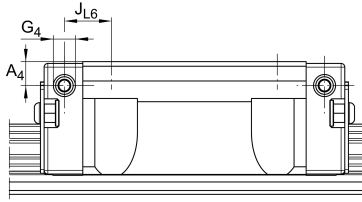


Your current product variant

Size code	30
Version	B
Carriage design	L Long carriage

Main Dimensions & Performance Data

H	42 mm	Height system
B	90 mm	Width carriage
L	127 mm	Overall length carriage
C	34.500 N	Dynamic load rating
C ₀	74.000 N	Static load rating
M _{0x}	1.310 Nm	Static moment rating about X axis
M _{0y}	1.240 Nm	Static moment rating about Y axis
M _{0z}	1.240 Nm	Static moment rating about Z axis
≈m	1,7 kg	Weight



Mounting dimensions

A ₁	31 mm	Distance from locating edge on carriage to locating edge on guideway
J _B	72 mm	
b	28 mm	Width rail
A ₂	9 mm	Distance from locating edge to hole
L ₁	100 mm	
L _S	1,65 mm	
J _L	52 mm	
J _{LZ}	44 mm	
H ₁	5,9 mm	Free space, system dimension
H ₄	13,8 mm	
H ₅	6,25 mm	
T ₅	12 mm	Thread depth
T ₆	11,5 mm	
G ₂	M10	Fixing screws above (DIN ISO 4762-12.9)
G _{2 M_A}	41 Nm	Maximum tightening torque
K ₃	M8	Fixing screws below (DIN ISO 4762-12.9)
K _{3 M_A}	41 Nm	Maximum tightening torque
K ₆	M8	Fixing screws below (DIN ISO 4762-12.9)
K _{6 M_A}	41 Nm	Maximum tightening torque
D ₂	8,6 mm	
A ₃	11,5 mm	Position lubrication connector
G ₃	M6	Lubrication connector
t _{G₃}	7 mm	Maximum permissible screw depth for lubrication connectors
A ₄	7 mm	Position lubrication connector
G ₄	M6	Lubrication connector
t _{G₄}	7 mm	Maximum permissible screw depth for lubrication connectors
J _{L6}	29,5 mm	Position lubrication connector



View product details on medias

25.04.2026, 08:44:12 UTC

SCHAEFFLER

Additional information

VMKB_065

KWVE

Material name