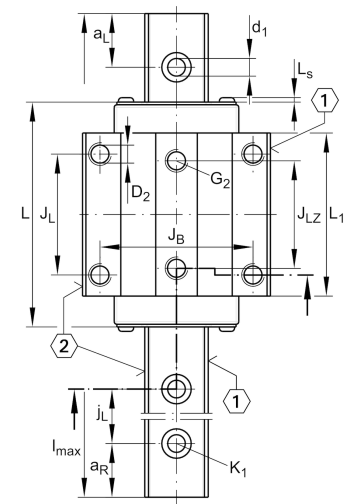
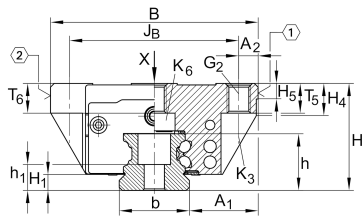


Technical information



Your current product variant

Size code	35
Version	B
Carriage design	L Long carriage

Main Dimensions & Performance Data

H	48 mm	Height system
B	100 mm	Width carriage
L	145 mm	Overall length carriage
C	47.500 N	Dynamic load rating
C ₀	100.000 N	Static load rating
M _{0x}	2.625 Nm	Static moment rating about X axis
M _{0y}	1.890 Nm	Static moment rating about Y axis
M _{0z}	1.890 Nm	Static moment rating about Z axis
≈m	2,52 kg	Weight



Mounting dimensions

A ₁	33 mm	Distance from locating edge on carriage to locating edge on guideway
J _B	82 mm	
b	34 mm	Width rail
A ₂	9 mm	Distance from locating edge to hole
L ₁	113 mm	
L _S	1,65 mm	
J _L	62 mm	
J _{LZ}	52 mm	
H ₁	6,7 mm	Free space, system dimension
H ₄	14,3 mm	
H ₅	6,75 mm	
T ₅	13 mm	Thread depth
T ₆	12,3 mm	
G ₂	M10	Fixing screws above (DIN ISO 4762-12.9)
G ₂ M _A	41 Nm	Maximum tightening torque
K ₃	M8	Fixing screws below (DIN ISO 4762-12.9)
K ₃ M _A	41 Nm	Maximum tightening torque
K ₆	M8	Fixing screws below (DIN ISO 4762-12.9)
K ₆ M _A	41 Nm	Maximum tightening torque
D ₂	8,6 mm	
A ₃	12,3 mm	Position lubrication connector
G ₃	M6	Lubrication connector
t _{G 3}	7 mm	Maximum permissible screw depth for lubrication connectors
A ₄	11 mm	Position lubrication connector
G ₄	M6	Lubrication connector
t _{G 4}	7 mm	Maximum permissible screw depth for lubrication connectors
J _{L6}	32,5 mm	Position lubrication connector



View product details on medias

25.04.2026, 08:38:46 UTC

SCHAEFFLER

Additional information

VMKB_065

KWVE

Material name