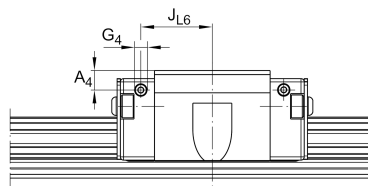
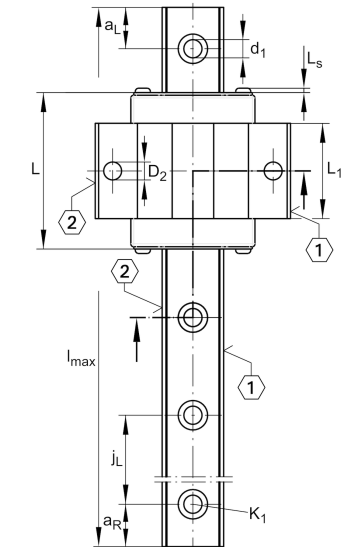
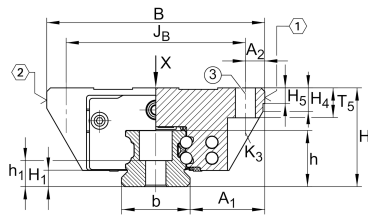


KWVE15-B-EC

Recirculating ball bearing carriage

Carriages KWVE..-B-EC, expanded interchangeability, short carriage, four-row

Technical information

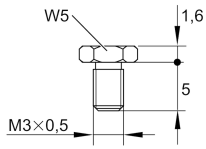
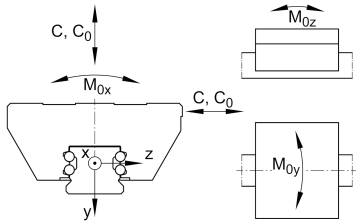
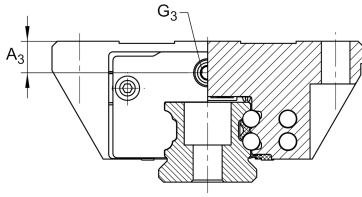


Your current product variant

Size code	15	
Version	B	
Carriage design	EC	Expanded design, short carriage (carriage without screw threads)

Main Dimensions & Performance Data

H	24 mm	Height system
B	52 mm	Width carriage
L	44,5 mm	Overall length carriage
C	4.900 N	Dynamic load rating
C ₀	8.300 N	Static load rating
M _{0x}	86 Nm	Static moment rating about X axis
M _{0y}	35 Nm	Static moment rating about Y axis
M _{0z}	35 Nm	Static moment rating about Z axis
≈m	0,13 kg	Weight



S16

Mounting dimensions

A ₁	18,5 mm	Distance from locating edge on carriage to locating edge on guideway
J _B	41 mm	
b	15 mm	Width rail
A ₂	5,5 mm	Distance from locating edge to hole
L ₁	23,1 mm	
L _S	1,3 mm	
H ₁	4,3 mm	Free space, system dimension
H ₄	6,1 mm	
H ₅	4,75 mm	
T ₅	7 mm	Thread depth
K ₃	M4	Fixing screws below (DIN ISO 4762-12.9)
K _{3 M A}	5 Nm	Maximum tightening torque
D ₂	4,5 mm	
A ₃	4,3 mm	Position lubrication connector
G ₃	M3	Lubrication connector
t _{G 3}	5,5 mm	Maximum permissible screw depth for lubrication connectors
A ₄	3,2 mm	Position lubrication connector
G ₄	M3	Lubrication connector
t _{G 4}	5,5 mm	Maximum permissible screw depth for lubrication connectors
J _{L6}	15,8 mm	Position lubrication connector

Additional information

VMKB_065	KWVE	Material name
----------	------	---------------