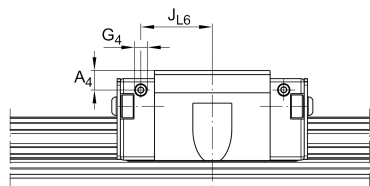
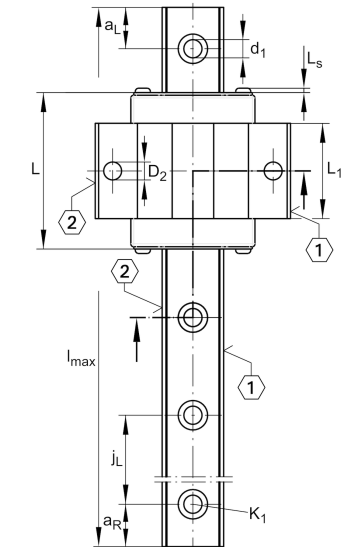
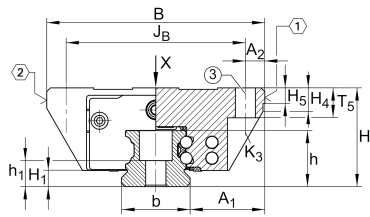


### KWVE25-B-EC [↗](#)

Recirculating ball bearing carriage

Carriages KWVE..-B-EC, expanded interchangeability, short carriage, four-row

## Technical information

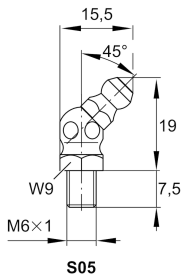
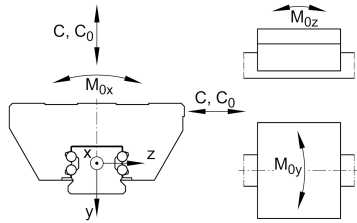


### Your current product variant

Size	25	
Version	B	
Carriage design	EC	Expanded design, short carriage (carriage without screw threads)

### Main Dimensions & Performance Data

H	33 mm	Height system
B	73 mm	Width carriage
L	58,2 mm	Overall length carriage
C	12.500 N	Dynamic load rating
C <sub>0</sub>	22.200 N	Static load rating
M <sub>0x</sub>	305 Nm	Static moment rating about X axis
M <sub>0y</sub>	155 Nm	Static moment rating about Y axis
M <sub>0z</sub>	155 Nm	Static moment rating about Z axis
≈m	0,4 kg	Weight



## Mounting dimensions

A <sub>1</sub>	25 mm	Distance from locating edge on carriage to locating edge on guideway
J <sub>B</sub>	60 mm	
b	23 mm	Width rail
A <sub>2</sub>	6,5 mm	Distance from locating edge to hole
L <sub>1</sub>	35,6 mm	
L <sub>S</sub>	1,65 mm	
H <sub>1</sub>	5,1 mm	Free space, system dimension
H <sub>4</sub>	7,85 mm	
H <sub>5</sub>	5,25 mm	
T <sub>5</sub>	10 mm	Thread depth
K <sub>3</sub>	M6	Fixing screws below (DIN ISO 4762-12.9)
K <sub>3 M<sub>A</sub></sub>	17 Nm	Maximum tightening torque
D <sub>2</sub>	6,7 mm	
A <sub>3</sub>	8 mm	Position lubrication connector
G <sub>3</sub>	M6	Lubrication connector
t <sub>G<sub>3</sub></sub>	7 mm	Maximum permissible screw depth for lubrication connectors
A <sub>4</sub>	6 mm	Position lubrication connector
G <sub>4</sub>	M3	Lubrication connector
t <sub>G<sub>4</sub></sub>	6 mm	Maximum permissible screw depth for lubrication connectors
J <sub>L6</sub>	22 mm	Position lubrication connector

## Additional information

VMKB_065	KWVE	Material name
----------	------	---------------