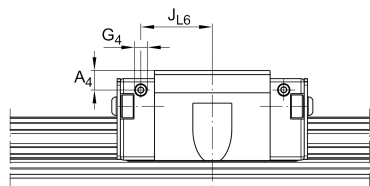
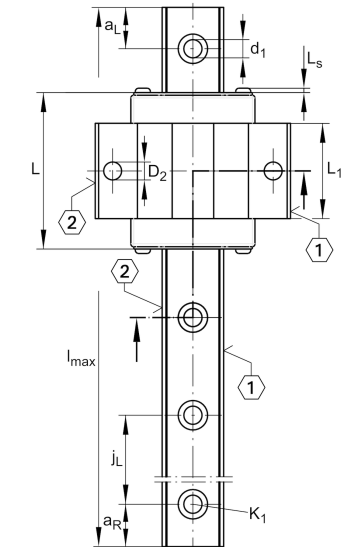
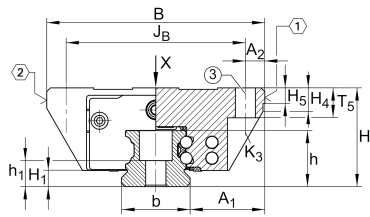


### KWVE30-B-EC

Recirculating ball bearing carriage

Carriages KWVE...-B-EC, expanded interchangeability, short carriage, four-row

## Technical information

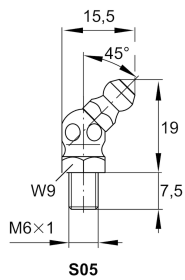
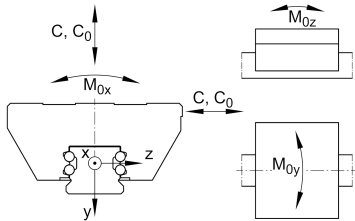
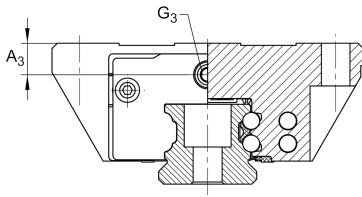


### Your current product variant

Size code	30	
Version	B	
Carriage design	EC	Expanded design, short carriage (carriage without screw threads)

### Main Dimensions & Performance Data

H	42 mm	Height system
B	90 mm	Width carriage
L	69 mm	Overall length carriage
C	18.700 N	Dynamic load rating
C <sub>0</sub>	31.500 N	Static load rating
M <sub>0x</sub>	554 Nm	Static moment rating about X axis
M <sub>0y</sub>	248 Nm	Static moment rating about Y axis
M <sub>0z</sub>	248 Nm	Static moment rating about Z axis
≈m	0,75 kg	Weight



## Mounting dimensions

A <sub>1</sub>	31 mm	Distance from locating edge on carriage to locating edge on guideway
J <sub>B</sub>	72 mm	
b	28 mm	Width rail
A <sub>2</sub>	9 mm	Distance from locating edge to hole
L <sub>1</sub>	42 mm	
L <sub>S</sub>	1,65 mm	
H <sub>1</sub>	5,9 mm	Free space, system dimension
H <sub>4</sub>	13,8 mm	
H <sub>5</sub>	6,25 mm	
T <sub>5</sub>	12 mm	Thread depth
K <sub>3</sub>	M8	Fixing screws below (DIN ISO 4762-12.9)
K <sub>3 M<sub>A</sub></sub>	41 Nm	Maximum tightening torque
D <sub>2</sub>	8,6 mm	
A <sub>3</sub>	11,5 mm	Position lubrication connector
G <sub>3</sub>	M6	Lubrication connector
t <sub>G<sub>3</sub></sub>	7 mm	Maximum permissible screw depth for lubrication connectors
A <sub>4</sub>	7 mm	Position lubrication connector
G <sub>4</sub>	M6	Lubrication connector
t <sub>G<sub>4</sub></sub>	7 mm	Maximum permissible screw depth for lubrication connectors
J <sub>L6</sub>	26,5 mm	Position lubrication connector

## Additional information

VMKB_065	KWVE	Material name
----------	------	---------------