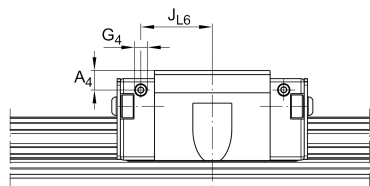
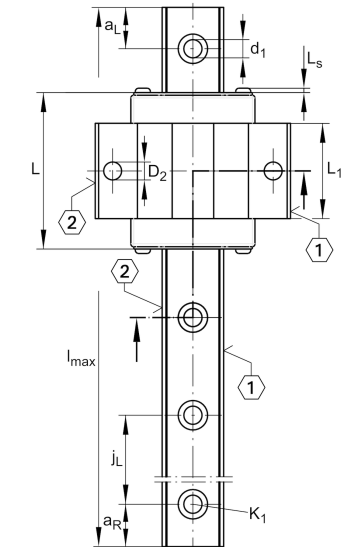
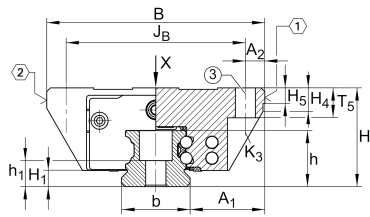


KWVE35-B-EC [↗](#)

Recirculating ball bearing carriage

Carriages KWVE...-B-EC, expanded interchangeability, short carriage, four-row

Technical information

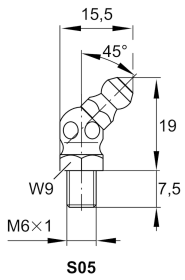
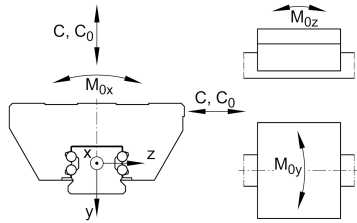


Your current product variant

Size code	35
Version	B
Carriage design	EC Expanded design, short carriage (carriage without screw threads)

Main Dimensions & Performance Data

H	48 mm	Height system
B	100 mm	Width carriage
L	76,2 mm	Overall length carriage
C	24.600 N	Dynamic load rating
C ₀	39.000 N	Static load rating
M _{0x}	790 Nm	Static moment rating about X axis
M _{0y}	330 Nm	Static moment rating about Y axis
M _{0z}	330 Nm	Static moment rating about Z axis
≈m	1,04 kg	Weight



Mounting dimensions

A ₁	33 mm	Distance from locating edge on carriage to locating edge on guideway
J _B	82 mm	
b	34 mm	Width rail
A ₂	9 mm	Distance from locating edge to hole
L ₁	44,2 mm	
L _S	1,65 mm	
H ₁	6,7 mm	Free space, system dimension
H ₄	14,3 mm	
H ₅	6,75 mm	
T ₅	13,5 mm	Thread depth
K ₃	M8	Fixing screws below (DIN ISO 4762-12.9)
K _{3 M_A}	41 Nm	Maximum tightening torque
D ₂	8,6 mm	
A ₃	12,3 mm	Position lubrication connector
G ₃	M6	Lubrication connector
t _{G₃}	7 mm	Maximum permissible screw depth for lubrication connectors
A ₄	116 mm	Position lubrication connector
G ₄	M6	Lubrication connector
t _{G₄}	7 mm	Maximum permissible screw depth for lubrication connectors
J _{L6}	29,1 mm	Position lubrication connector

Additional information

VMKB_065	KWVE	Material name
----------	------	---------------