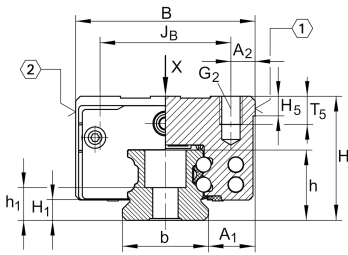


KWVE15-B-ESC

Recirculating ball bearing carriage

Carriages KWVE...-B-ESC, narrow, short carriage, four-row, full complement ball set

Technical information

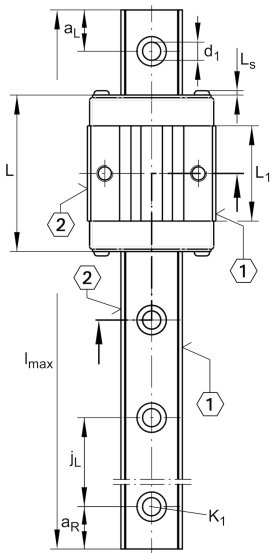


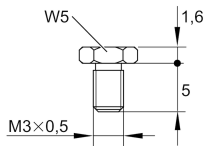
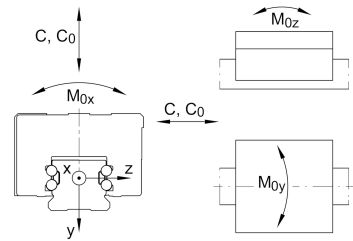
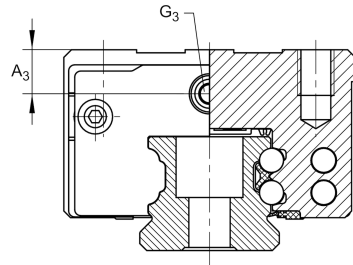
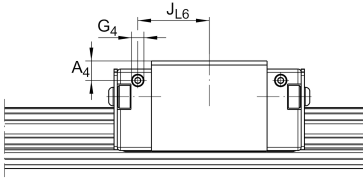
Your current product variant

Size	15
Version	B
Carriage design	ESC Expanded design, short, narrow carriage

Main Dimensions & Performance Data

H	24 mm	Height system
B	34 mm	Width carriage
L	44,5 mm	Overall length carriage
C	4.900 N	Dynamic load rating
C ₀	8.300 N	Static load rating
M _{0x}	86 Nm	Static moment rating about X axis
M _{0y}	35 Nm	Static moment rating about Y axis
M _{0z}	35 Nm	Static moment rating about Z axis
≈m	0,12 kg	Weight





S16

Mounting dimensions

A ₁	9,5 mm	Distance from locating edge on carriage to locating edge on guideway
J _B	26 mm	
b	15 mm	Width rail
A ₂	4 mm	Distance from locating edge to hole
L ₁	23,1 mm	
L _S	1,3 mm	
H ₁	4,3 mm	Free space, system dimension
H ₅	4,75 mm	
T ₅	6 mm	Thread depth
G ₂	M4	Fixing screws above (DIN ISO 4762-12.9)
G _{2 M_A}	5 Nm	Maximum tightening torque
A ₃	4,3 mm	Position lubrication connector
G ₃	M3	Lubrication connector
t _{G₃}	5,5 mm	Maximum permissible screw depth for lubrication connectors
A ₄	3,2 mm	Position lubrication connector
G ₄	M3	Lubrication connector
t _{G₄}	5,5 mm	Maximum permissible screw depth for lubrication connectors
J _{L6}	15,8 mm	Position lubrication connector

Additional information

VMKB_065	KWVE	Material name
----------	------	---------------