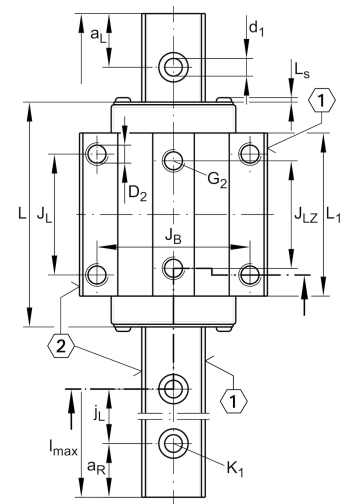
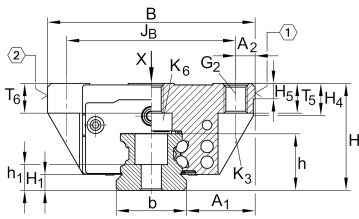


Technical information

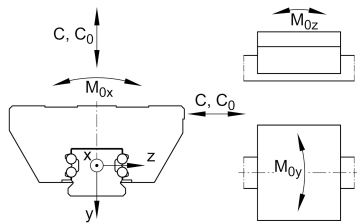


Your current product variant

Size code	30
Version	B
Carriage design	NL Low, long carriage

Main Dimensions & Performance Data

H	38 mm	Height system
B	90 mm	Width carriage
L	127 mm	Overall length carriage
C	34.500 N	Dynamic load rating
C <sub>0</sub>	74.000 N	Static load rating
M <sub>0x</sub>	1.310 Nm	Static moment rating about X axis
M <sub>0y</sub>	1.240 Nm	Static moment rating about Y axis
M <sub>0z</sub>	1.240 Nm	Static moment rating about Z axis
≈m	1,5 kg	Weight



### Mounting dimensions

A <sub>1</sub>	31 mm	Distance from locating edge on carriage to locating edge on guideway
J <sub>B</sub>	72 mm	
b	28 mm	Width rail
A <sub>2</sub>	9 mm	Distance from locating edge to hole
L <sub>1</sub>	100 mm	
L <sub>S</sub>	1,65 mm	
J <sub>L</sub>	52 mm	
J <sub>LZ</sub>	44 mm	
H <sub>1</sub>	5,9 mm	Free space, system dimension
H <sub>4</sub>	9,8 mm	
H <sub>5</sub>	6,25 mm	
T <sub>5</sub>	12 mm	Thread depth
T <sub>6</sub>	9 mm	
G <sub>2</sub>	M10	Fixing screws above (DIN ISO 4762-12.9)
G <sub>2</sub> M <sub>A</sub>	41 Nm	Maximum tightening torque
K <sub>3</sub>	M8	Fixing screws below (DIN ISO 4762-12.9)
K <sub>3</sub> M <sub>A</sub>	41 Nm	Maximum tightening torque
K <sub>6</sub>	M8	Fixing screws below (DIN 7984-8.8)
K <sub>6</sub> M <sub>A</sub>	12 Nm	Maximum tightening torque
D <sub>2</sub>	8,6 mm	
A <sub>3</sub>	7,5 mm	Position lubrication connector
G <sub>3</sub>	M6	Lubrication connector
t <sub>G<sub>3</sub></sub>	7 mm	Maximum permissible screw depth for lubrication connectors
A <sub>4</sub>	4,95 mm	Position lubrication connector
G <sub>4</sub>	M5	Lubrication connector
t <sub>G<sub>4</sub></sub>	7 mm	Maximum permissible screw depth for lubrication connectors
J <sub>L6</sub>	29,1 mm	Position lubrication connector



View product details on medias

26.04.2026, 09:13:34 UTC

**SCHAEFFLER**

### Additional information

---

VMKB\_065

KWVE

Material name