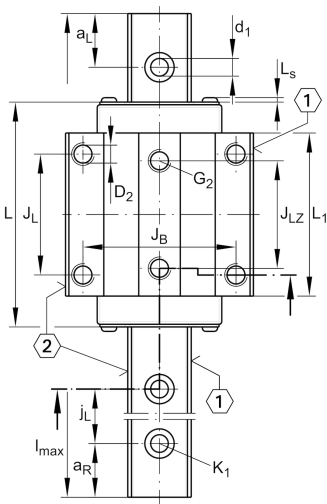
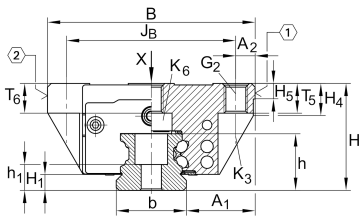


**KWVE35-B-NL** [↗](#)

Recirculating ball bearing carriage

Carriages KWVE...-B-NL, low, long carriage, four-row

Technical information



Your current product variant

Size code	35
Version	B
Carriage design	NL Low, long carriage

Main Dimensions & Performance Data

H	44 mm	Height system
B	100 mm	Width carriage
L	145 mm	Overall length carriage
C	47.500 N	Dynamic load rating
C ₀	100.000 N	Static load rating
M _{0x}	2.625 Nm	Static moment rating about X axis
M _{0y}	1.890 Nm	Static moment rating about Y axis
M _{0z}	1.890 Nm	Static moment rating about Z axis
≈m	2,23 kg	Weight



Mounting dimensions

A ₁	33 mm	Distance from locating edge on carriage to locating edge on guideway
J _B	82 mm	
b	34 mm	Width rail
A ₂	9 mm	Distance from locating edge to hole
L ₁	113 mm	
L _S	1,65 mm	
J _L	62 mm	
J _{LZ}	52 mm	
H ₁	6,7 mm	Free space, system dimension
H ₄	10,3 mm	
H ₅	6,75 mm	
T ₅	13 mm	Thread depth
T ₆	8,3 mm	
G ₂	M10	Fixing screws above (DIN ISO 4762-12.9)
G _{2 M_A}	41 Nm	Maximum tightening torque
K ₃	M8	Fixing screws below (DIN ISO 4762-12.9)
K _{3 M_A}	41 Nm	Maximum tightening torque
K ₆	M8	Fixing screws below (DIN 7984-8.8)
K _{6 M_A}	12 Nm	Maximum tightening torque
D ₂	8,6 mm	
A ₃	8,3 mm	Position lubrication connector
G ₃	M6	Lubrication connector
t _{G₃}	7 mm	Maximum permissible screw depth for lubrication connectors
A ₄	7 mm	Position lubrication connector
G ₄	M6	Lubrication connector
t _{G₄}	7 mm	Maximum permissible screw depth for lubrication connectors
J _{L6}	32,5 mm	Position lubrication connector



View product details on medias

28.04.2026, 02:52:31 UTC

SCHAEFFLER

Additional information

VMKB_065

KWVE

Material name