

**KWVE45-B-NL** [↗](#)

Recirculating ball bearing carriage

Carriages KWVE...-B-NL, low, long carriage, four-row

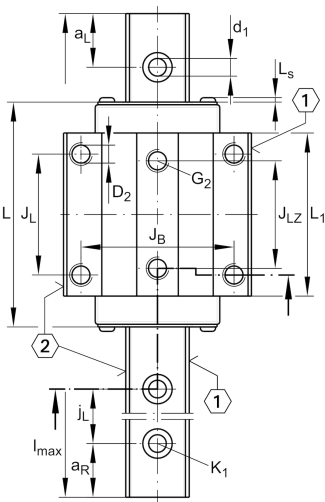
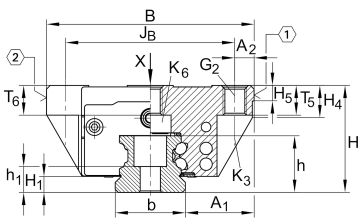
Technical information

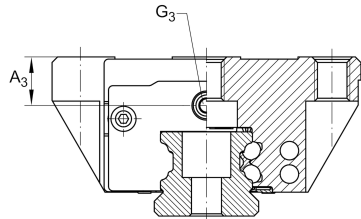
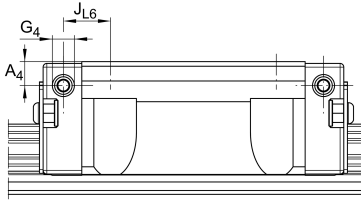
Your current product variant

Size Code	45
Version	B
Carriage design	NL Low, long carriage

Main Dimensions & Performance Data

H	52 mm	Height system
B	120 mm	Width carriage
L	172,7 mm	Overall length carriage
C	82.000 N	Dynamic load rating
C ₀	181.000 N	Static load rating
M _{0x}	4.635 Nm	Static moment rating about X axis
M _{0y}	4.000 Nm	Static moment rating about Y axis
M _{0z}	4.000 Nm	Static moment rating about Z axis
≈m	3,38 kg	Weight





Mounting dimensions

A ₁	37,5 mm	Distance from locating edge on carriage to locating edge on guideway
J _B	100 mm	
b	45 mm	Width rail
A ₂	10 mm	Distance from locating edge to hole
L ₁	134,6 mm	
L _S	2,2 mm	
J _L	80 mm	
J _{LZ}	60 mm	
H ₁	9,7 mm	Free space, system dimension
H ₄	17,2 mm	
H ₅	9,25 mm	
T ₅	15 mm	Thread depth
T ₆	11 mm	
G ₂	M12	Fixing screws above (DIN ISO 4762-12.9)
G ₂ M _A	83 Nm	Maximum tightening torque
K ₃	M10	Fixing screws below (DIN ISO 4762-12.9)
K ₃ M _A	83 Nm	Maximum tightening torque
K ₆	M10	Fixing screws below (DIN 7984-8.8)
K ₆ M _A	35 Nm	Maximum tightening torque
D ₂	10,6 mm	
A ₃	8,5 mm	Position lubrication connector
G ₃	M6	Lubrication connector
t _{G₃}	7 mm	Maximum permissible screw depth for lubrication connectors
A ₄	8,5 mm	Position lubrication connector
G ₄	M6	Lubrication connector
t _{G₄}	7 mm	Maximum permissible screw depth for lubrication connectors
J _{L6}	35,5 mm	Position lubrication connector



View product details on medias

01.05.2026, 08:32:29 UTC

SCHAEFFLER

Additional information

VMKB_065

KWVE

Material name