



### KWVE30-B-SL

Recirculating ball bearing carriage

Carriages KWVE...-B-SL, narrow, long carriage, four-row

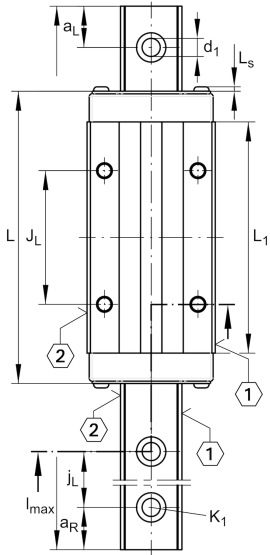
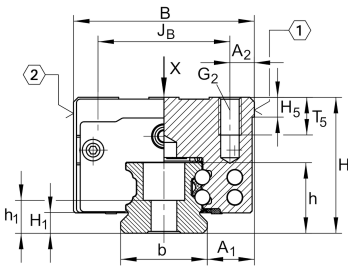
## Technical information

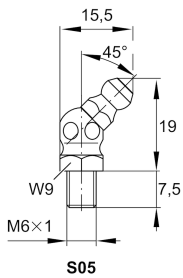
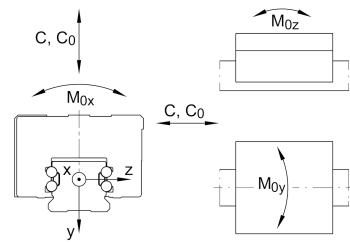
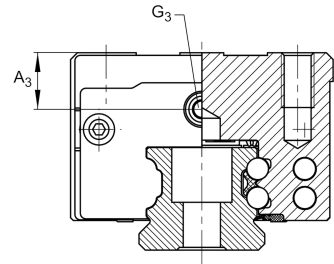
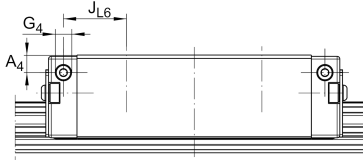
### Your current product variant

Size Code	30
Version	B
Carriage design	SL <span style="float: right;">Narrow, long carriage</span>

### Main Dimensions & Performance Data

H	42 mm	Height system
B	60 mm	Width carriage
L	127 mm	Overall length carriage
C	34.500 N	Dynamic load rating
C <sub>0</sub>	74.000 N	Static load rating
M <sub>0x</sub>	1.310 Nm	Static moment rating about X axis
M <sub>0y</sub>	1.240 Nm	Static moment rating about Y axis
M <sub>0z</sub>	1.240 Nm	Static moment rating about Z axis
≈m	1,7 kg	Weight





## Mounting dimensions

A <sub>1</sub>	16 mm	Distance from locating edge on carriage to locating edge on guideway
J <sub>B</sub>	40 mm	
b	28 mm	Width rail
A <sub>2</sub>	10 mm	Distance from locating edge to hole
L <sub>1</sub>	100 mm	
L <sub>S</sub>	1,65 mm	
J <sub>L</sub>	60 mm	
H <sub>1</sub>	5,9 mm	Free space, system dimension
H <sub>5</sub>	6,25 mm	
T <sub>5</sub>	13,5 mm	Thread depth
G <sub>2</sub>	M8	Fixing screws above (DIN ISO 4762-12.9)
G <sub>2</sub> M <sub>A</sub>	41 Nm	Maximum tightening torque
A <sub>3</sub>	11,5 mm	Position lubrication connector
G <sub>3</sub>	M6	Lubrication connector
t G <sub>3</sub>	7 mm	Maximum permissible screw depth for lubrication connectors
A <sub>4</sub>	7 mm	Position lubrication connector
G <sub>4</sub>	M6	Lubrication connector
t G <sub>4</sub>	7 mm	Maximum permissible screw depth for lubrication connectors
J <sub>L6</sub>	25,5 mm	Position lubrication connector

## Additional information

VMKB_065	KWVE	Material name
----------	------	---------------