

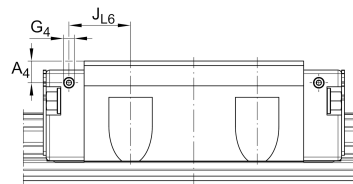
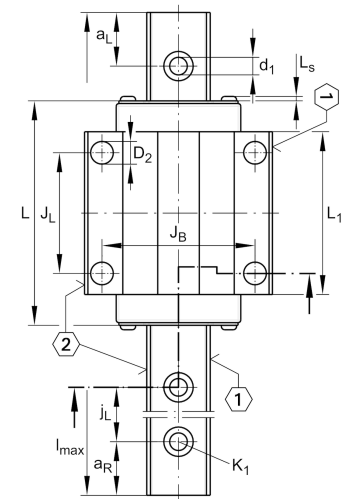
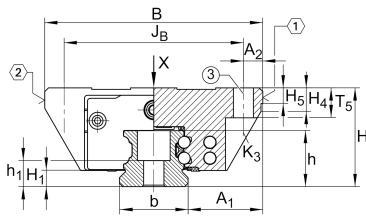


KWVE15-B-E [↗](#)

Recirculating ball bearing carriage

Carriages KWVE..-B-E, standard carriage, four-row, full complement, expanded type

Technical information

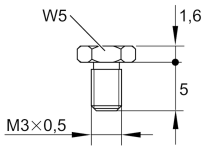
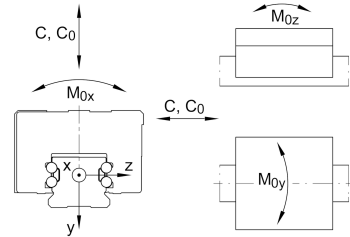


Your current product variant

Size code	15
Version	B
Carriage design	E Expanded design (carriage without screw threads)

Main Dimensions & Performance Data

H	24 mm	Height system
B	52 mm	Width carriage
L	61,2 mm	Overall length carriage
C	7.200 N	Dynamic load rating
C ₀	14.500 N	Static load rating
M _{0x}	150 Nm	Static moment rating about X axis
M _{0y}	100 Nm	Static moment rating about Y axis
M _{0z}	100 Nm	Static moment rating about Z axis
≈m	0,2 kg	Weight



S16

Mounting dimensions

A ₁	18,5 mm	Distance from locating edge on carriage to locating edge on guideway
J _B	41 mm	
b	15 mm	Width rail
A ₂	5,5 mm	Distance from locating edge to hole
L ₁	39,8 mm	
L _S	1,3 mm	
J _L	26 mm	
H ₁	4,3 mm	Free space, system dimension
H ₄	6,1 mm	
H ₅	4,75 mm	
T ₅	7 mm	Thread depth
K ₃	M4	Fixing screws below (DIN ISO 4762-12.9)
K3 M _A	5 Nm	Maximum tightening torque
D ₂	4,5 mm	
A ₃	4,3 mm	Position lubrication connector
G ₃	M3	Lubrication connector
t _{G₃}	5,5 mm	Maximum permissible screw depth for lubrication connectors
A ₄	3,2 mm	Position lubrication connector
G ₄	M3	Lubrication connector
t _{G₄}	5,5 mm	Maximum permissible screw depth for lubrication connectors
J _{L6}	11,1 mm	Position lubrication connector

Additional information

VMKB_065	KWVE	Material name
----------	------	---------------