

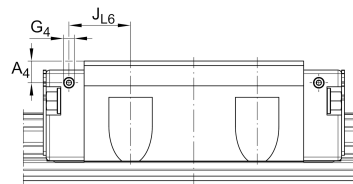
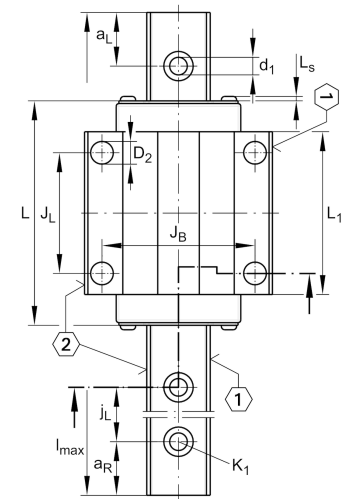
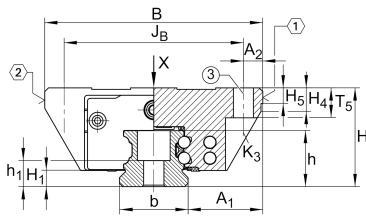


KWVE25-B-E [↗](#)

Recirculating ball bearing carriage

Carriages KWVE...-B-E, standard carriage, four-row, full complement, expanded type

Technical information

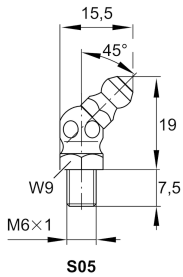
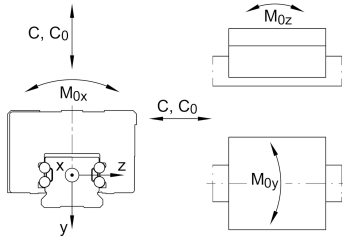


Your current product variant

Size code	25
Version	B
Carriage design	E Expanded design (carriage without screw threads)

Main Dimensions & Performance Data

H	33 mm	Height system
B	73 mm	Width carriage
L	83,3 mm	Overall length carriage
C	17.900 N	Dynamic load rating
C ₀	37.000 N	Static load rating
M _{0x}	510 Nm	Static moment rating about X axis
M _{0y}	395 Nm	Static moment rating about Y axis
M _{0z}	395 Nm	Static moment rating about Z axis
≈m	0,68 kg	Weight



Mounting dimensions

A ₁	25 mm	Distance from locating edge on carriage to locating edge on guideway
J _B	60 mm	
b	23 mm	Width rail
A ₂	6,5 mm	Distance from locating edge to hole
L ₁	60,7 mm	
L _S	1,65 mm	
J _L	35 mm	
H ₁	5,1 mm	Free space, system dimension
H ₄	7,85 mm	
H ₅	5,25 mm	
T ₅	10 mm	Thread depth
K ₃	M6	Fixing screws below (DIN ISO 4762-12.9)
K _{3 M_A}	17 Nm	Maximum tightening torque
D ₂	6,7 mm	
A ₃	8 mm	Position lubrication connector
G ₃	M6	Lubrication connector
t _{G₃}	7 mm	Maximum permissible screw depth for lubrication connectors
A ₄	6 mm	Position lubrication connector
G ₄	M3	Lubrication connector
t _{G₄}	7 mm	Maximum permissible screw depth for lubrication connectors
J _{L6}	17,05 mm	Position lubrication connector

Additional information

VMKB_065	KWVE	Material name
----------	------	---------------