

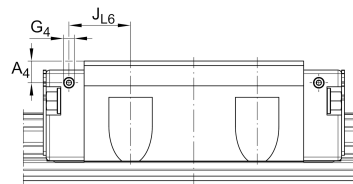
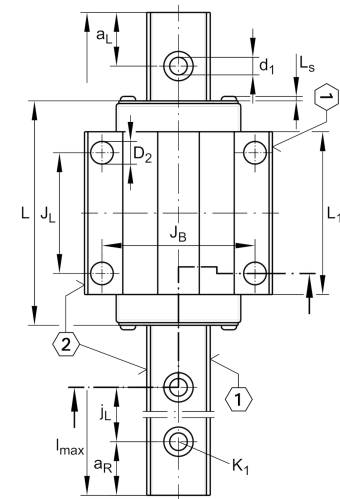
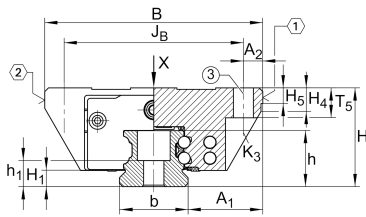


KWVE30-B-E [↗](#)

Recirculating ball bearing carriage

Carriages KWVE...-B-E, standard carriage, four-row, full complement, expanded type

Technical information

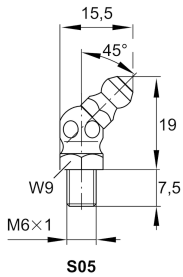
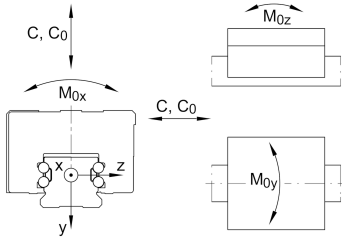


Your current product variant

Size Code	30
Version	B
Carriage design	E Expanded design (carriage without screw threads)

Main Dimensions & Performance Data

H	42 mm	Height system
B	90 mm	Width carriage
L	99 mm	Overall length carriage
C	27.500 N	Dynamic load rating
C ₀	55.000 N	Static load rating
M _{0x}	970 Nm	Static moment rating about X axis
M _{0y}	700 Nm	Static moment rating about Y axis
M _{0z}	700 Nm	Static moment rating about Z axis
≈m	1,2 kg	Weight



Mounting dimensions

A ₁	31 mm	Distance from locating edge on carriage to locating edge on guideway
J _B	72 mm	
b	28 mm	Width rail
A ₂	9 mm	Distance from locating edge to hole
L ₁	72 mm	
L _S	1,65 mm	
J _L	40 mm	
H ₁	5,9 mm	Free space, system dimension
H ₄	13,8 mm	
H ₅	6,25 mm	
T ₅	12 mm	Thread depth
K ₃	M8	Fixing screws below (DIN ISO 4762-12.9)
K3 M _A	41 Nm	Maximum tightening torque
D ₂	8,6 mm	
A ₃	11,5 mm	Position lubrication connector
G ₃	M6	Lubrication connector
t _{G3}	7 mm	Maximum permissible screw depth for lubrication connectors
A ₄	7 mm	Position lubrication connector
G ₄	M6	Lubrication connector
t _{G4}	7 mm	Maximum permissible screw depth for lubrication connectors
J _{L6}	21,1 mm	Position lubrication connector

Additional information

VMKB_065	KWVE	Material name
----------	------	---------------