

**KWVE20-B-ES**

Recirculating ball bearing carriage

Carriages KWVE...-B-ES, carriage for four-row linear ball bearing and guideway assembly, expanded type, narrow design

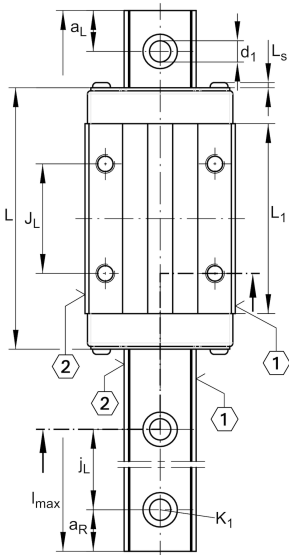
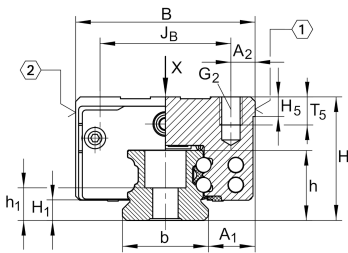
Technical information

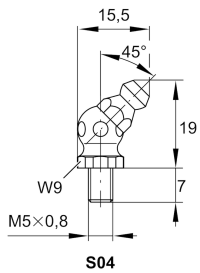
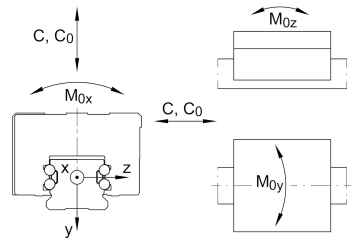
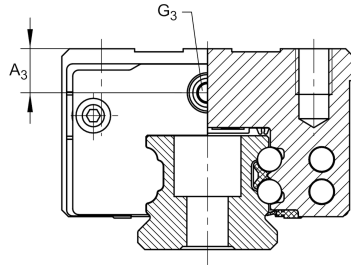
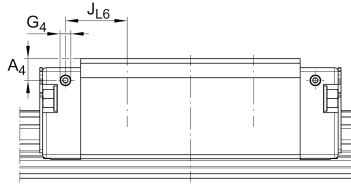
Your current product variant

Size code	20
Version	B
Carriage design	ES Expanded design, narrow carriage

Main Dimensions & Performance Data

H	28 mm	Height system
B	42 mm	Width carriage
L	71,4 mm	Overall length carriage
C	13.100 N	Dynamic load rating
C ₀	27.000 N	Static load rating
M _{0x}	332 Nm	Static moment rating about X axis
M _{0y}	240 Nm	Static moment rating about Y axis
M _{0z}	240 Nm	Static moment rating about Z axis
≈m	0,31 kg	Weight





S04

Mounting dimensions

A ₁	11 mm	Distance from locating edge on carriage to locating edge on guideway
J _B	32 mm	
b	20 mm	Width rail
A ₂	5 mm	Distance from locating edge to hole
L ₁	50,4 mm	
L _S	1,3 mm	
J _L	32 mm	
H ₁	4,5 mm	Free space, system dimension
H ₅	5,25 mm	
T ₅	7,5 mm	Thread depth
G ₂	M5	Fixing screws above (DIN ISO 4762-12.9)
G _{2 M_A}	10 Nm	Maximum tightening torque
A ₃	8 mm	Position lubrication connector
G ₃	M5	Lubrication connector
t _{G₃}	7 mm	Maximum permissible screw depth for lubrication connectors
A ₄	4,6 mm	Position lubrication connector
G ₄	M3	Lubrication connector
t _{G₄}	5,5 mm	Maximum permissible screw depth for lubrication connectors
J _{L6}	9,4 mm	Position lubrication connector

Additional information

VMKB_065	KWVE	Material name
----------	------	---------------