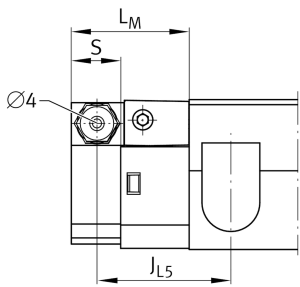
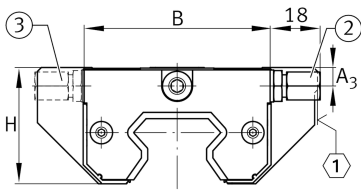
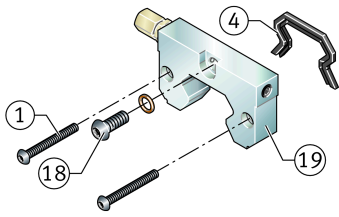


KIT.RWU35-E-A-OS-610 [↗](#)

Accessory kit

Sealing and lubrication elements KIT for RUE..

Technical information



Your current product variant

| | | |
|-------------------------------|-----|------------------------------|
| Size Code | 35 | |
| Suffix | E | Suffix |
| Suffix code (retrofitability) | OS | Retrofitting by the customer |
| KIT-number | 610 | KIT end number |

Main Dimensions & Performance Data

| | | |
|----------------|---------|-------------------------|
| K ₁ | M4x35 | Screw K1 |
| L _S | 0 mm | Dimension screw K1 |
| | S 2,5 | Hexagon socket screw K1 |
| S | 14,6 mm | Dimension |
| ≈m | 89 g | Weight |

Dimensions

| | | |
|-----------------|---------|--------------------------------------|
| B | 66,3 mm | Width |
| A ₃ | 6,6 mm | |
| H | 39,6 mm | Height |
| L _M | 32,6 mm | Dimension |
| J _{L5} | 37.1 | Mounting dimension |
| J _{L5} | 50.1 | Mounting dimension for long carriage |



Degree of contamination

| | |
|-----|--|
| Yes | KIT suitable for very slight degree of contamination |
| Yes | KIT suitable for slight degree of contamination |
| Yes | KIT suitable for moderate degree of contamination |
| No | KIT suitable for heavy degree of contamination |

Related products

| | |
|---|-----------------------------|
| Yes | KIT can be retrofitted |
| RUE35-E, RUE35-E-L, RUE35-E-H, RUE35-E-HL | For linear guidance system: |

Increase of displacement

| | |
|-----|--|
| Yes | Moderate increase in displacement force [++] |
|-----|--|