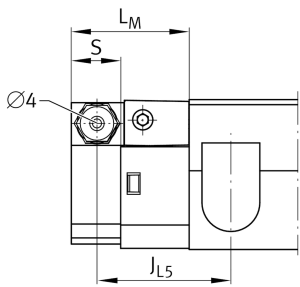
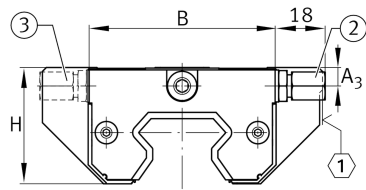
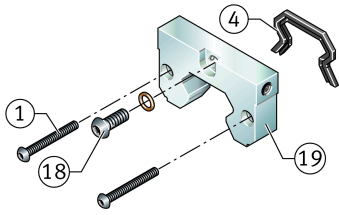


KIT.RWU35-E-A-OS-614 [↗](#)

Accessory kit

Sealing and lubrication elements KIT for RUE..

Technical information



Your current product variant

Size Code	35	
Suffix	E	Suffix
Suffix code (retrofitability)	OS	Retrofitting by the customer
KIT-number	614	KIT end number

Main Dimensions & Performance Data

K ₁	M4x35	Screw K1
L _S	0 mm	Dimension screw K1
	S 2,5	Hexagon socket screw K1
S	14,6 mm	Dimension
≈m	79 g	Weight

Dimensions

B	66,3 mm	Width
A ₃	6,6 mm	
H	39,6 mm	Height
L _M	32,6 mm	Dimension
J _{L5}	37.1	Mounting dimension
J _{L5}	50.1	Mounting dimension for long carriage



Degree of contamination

Yes	KIT suitable for very slight degree of contamination
Yes	KIT suitable for slight degree of contamination
Yes	KIT suitable for moderate degree of contamination
No	KIT suitable for heavy degree of contamination

Related products

Yes	KIT can be retrofitted
RUE35-E, RUE35-E-L, RUE35-E-H, RUE35-E-HL	For linear guidance system:

Increase of displacement

Yes	Moderate increase in displacement force [++]
-----	--