



### KUV25-B-SL

Ball monorail guidance system

Carriages KWVE...-B-SL, narrow, long carriage, four-row

## Technical information

### Your current product variant

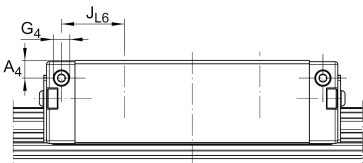
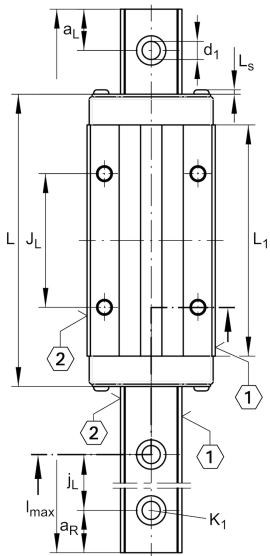
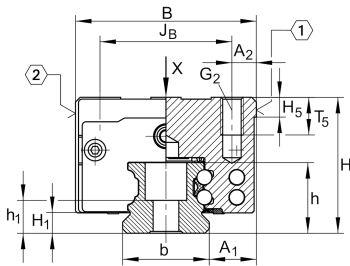
Size code	25	
Carriage design	SL	Narrow, long carriage
Version	B	

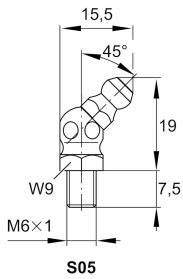
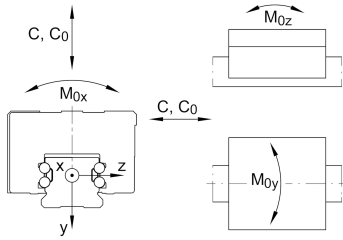
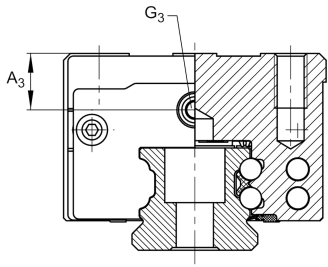
### Main dimensions

$l_{max}$	5.880 mm	Max length single piece guideway
H	36 mm	Height system
B	48 mm	Width carriage
L	109,1 mm	Overall length carriage

### Technical data

C	23.400 N	Dynamic load rating
$C_0$	54.000 N	Static load rating
$M_{0x}$	745 Nm	Static moment rating about X axis
$M_{0y}$	825 Nm	Static moment rating about Y axis
$M_{0z}$	825 Nm	Static moment rating about Z axis





### Mounting dimensions

A <sub>1</sub>	12,5 mm	Distance from locating edge on carriage to locating edge on guideway
J <sub>B</sub>	35 mm	
b	23 mm	Width rail
Tol <sub>b</sub>	-0,005 mm	Upper tolerance
Tol <sub>b</sub>	-0,03 mm	Lower tolerance
A <sub>2</sub>	6,5 mm	Distance from locating edge to hole
L <sub>1</sub>	86,5 mm	
L <sub>s</sub>	1,65 mm	
J <sub>L</sub>	50 mm	
j <sub>L</sub>	60 mm	
a <sub>L min</sub>	20 mm	
a <sub>L max</sub>	53 mm	
a <sub>R min</sub>	20 mm	
a <sub>R max</sub>	53 mm	
H <sub>1</sub>	5,1 mm	Free space, system dimension
H <sub>5</sub>	5,25 mm	
T <sub>5</sub>	10 mm	Thread depth
h	18,7 mm	
h <sub>1</sub>	8,2 mm	
G <sub>2</sub>	M6	Fixing screws
G <sub>2 MA</sub>	17 Nm	Maximum tightening torque
K <sub>1</sub>	M6	Fixing screws
K <sub>1 MA</sub>	17 Nm	Maximum tightening torque
d <sub>1</sub>	6,8 mm	
A <sub>3</sub>	11 mm	
G <sub>3</sub>	M6	
t <sub>G 3</sub>	7 mm	



View product details on medias

15.05.2026, 17:57:55 UTC

SCHAEFFLER

### Related products

---

KWVE25-B-SL

Compatible with the following carriage

TKVD25

Suitable Guide Rail