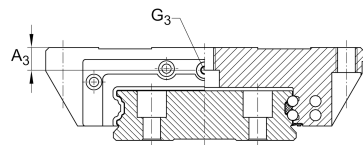
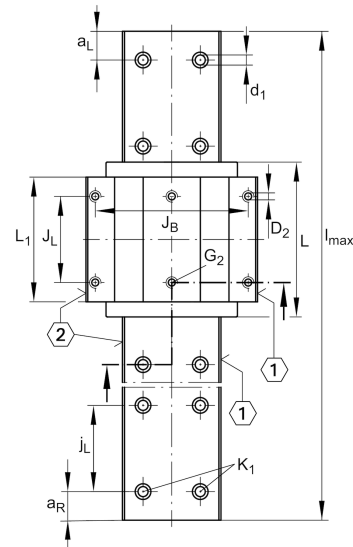
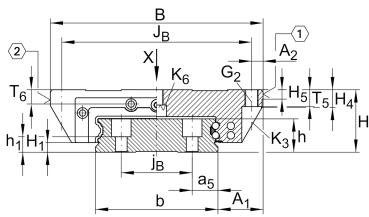


KUVE15-W [↗](#)

Ball monorail guidance system

Carriages KWVE..-W, wide carriage for linear recirculating ball bearing and guideway assembly

Technical information



Your current product variant

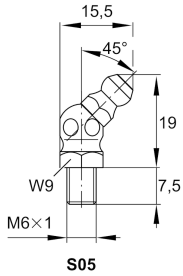
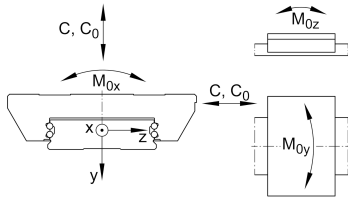
Size code	15
Carriage design	W Wide carriage and wide guideway

Main dimensions

l_{max}	2.890 mm	Max length single piece guideway
H	21 mm	Height system
B	68 mm	Width carriage
L	55,6 mm	Overall length carriage

Technical data

C	7.200 N	Dynamic load rating
C_0	14.500 N	Static load rating
M_{0x}	332 Nm	Static moment rating about X axis
M_{0y}	100 Nm	Static moment rating about Y axis
M_{0z}	100 Nm	Static moment rating about Z axis



Mounting dimensions

A ₁	15,5 mm	Distance from locating edge on carriage to locating edge on guideway
J _B	60 mm	
j _B	22 mm	
b	37 mm	Width rail
a ₅	7,5 mm	Distance
A ₂	4 mm	Distance from locating edge to hole
L ₁	39,8 mm	
J _L	29 mm	
j _L	50 mm	
a _{L min}	20 mm	
a _{L max}	44 mm	
a _{R min}	20 mm	
a _{R max}	44 mm	
H ₁	2,1 mm	Free space, system dimension
H ₄	7,7 mm	
H ₅	4,5 mm	
T ₅	7 mm	Thread depth
T ₆	4,8 mm	
h	12,9 mm	
h ₁	6 mm	
G ₂	M5	Fixing screws
G _{2 MA}	5,8 Nm	Maximum tightening torque
K ₁	M4	Fixing screws
K _{1 MA}	5 Nm	Maximum tightening torque
K ₃	M4	Fixing screws
K _{3 MA}	5 Nm	Maximum tightening torque
K ₆	M4	Fixing screws

The data sheet only contains an overview of the technical data of the selected product. Please refer to the additional documentation for this product. For further information, please use the following link on our website: [Contact form](#)

d₁ 4,6 mm



View product details on medias

30.04.2026, 18:28:33 UTC

SCHAEFFLER

Related products

KWVE15-W

Compatible with the following carriage

TKVD15-W

Suitable Guide Rail