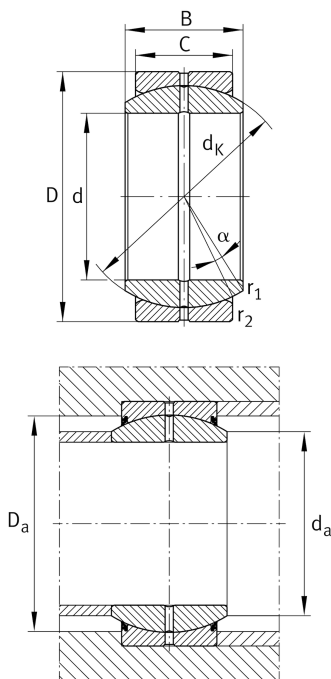


**GE50-DO-E**

Spherical plain bearing

Standard performance Radial spherical plain bearing, requiring maintenance, sliding contact surface: steel/steel, DIN ISO 12240-1, dimension series E, open design

Technical information



Your current product variant

| | |
|---------------------------|---|
| Maintenance | Maintenance required |
| Material | Steel |
| Type of Sealing | Without |
| Radial internal clearance | CN (Group N) Normal internal clearance |
| Coating | Durotect M Inner- and outer ring coated with Durotect M (Manganese Phosphate) |

Main Dimensions & Performance Data

| | | |
|-----------------|-----------|-----------------------------------|
| d | 50 mm | Bore diameter bearing |
| D | 75 mm | Outside diameter bearing |
| B | 35 mm | Width inner ring |
| C _r | 157.000 N | Basic dynamic load rating, radial |
| C _{0r} | 785.000 N | Basic static load rating, radial |
| ≈m | 0,53 kg | Weight |

Mounting dimensions

| | | |
|--------------------|---------|-------------------------------|
| r _{1smin} | 0,6 mm | Edge Spacing |
| r _{2smin} | 1 mm | Edge Spacing |
| d _{a max} | 55,9 mm | Connection measure Inner ring |
| D _{a min} | 63 mm | Housing Connection Diameter |



Dimensions

| | | |
|-------------------|-------------|--|
| C | 28 mm | Width Outer ring |
| d _K | 66 mm | Ball diameter |
| α | 6 ° | Tilt angle |
| d _{OT} | 0 mm | Bore diameter bearing, upper tolerance |
| d _{UT} | -0,012 mm | Bore diameter bearing, lower tolerance |
| D _{OT} | 0 mm | Outside diameter, upper tolerance |
| D _{UT} | -0,013 mm | Outside diameter, lower tolerance |
| B _{OT} | 0 mm | Width inner ring, upper tolerance |
| B _{UT} | -0,12 mm | Width inner ring, lower tolerance |
| C _{OT} | 0 mm | Width outer ring, upper tolerance |
| C _{UT} | -0,3 mm | Width outer ring, lower tolerance |
| G _r | 0,06 - 0,12 | Radial Clearance |
| G _{rmax} | 0,12 mm | Radial clearance, maximum |
| G _{rmin} | 0,06 mm | Radial clearance, minimum |

Temperature range

| | | |
|------------------|--------|----------------------------|
| T _{min} | -60 °C | Operating temperature min. |
| T _{max} | 200 °C | Operating temperature max. |

Characteristics

| | |
|---|--|
|  | Radial load |
|  | Axial load in one direction |
|  | Axial load in two directions |
|  | Grease Lubrication |
|  | Sealed on both sides |
|  | Static angular error and misalignment |
|  | Dynamic angular error and misalignment |