**LFS52**

## Guideway

solid profile, with two raceway shafts;  
corrosion-resistant design possible

## Technical information

## Your current product variant

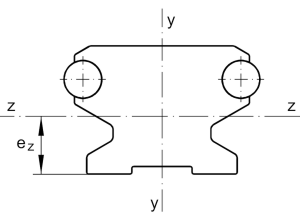
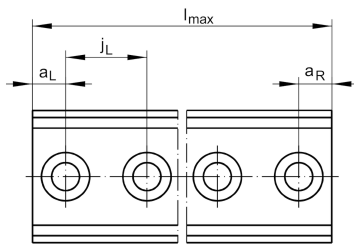
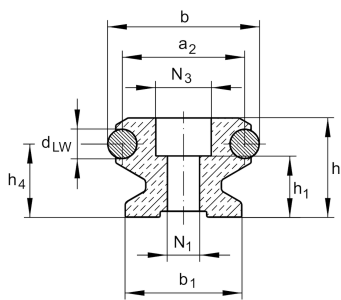
Size code	52
-----------	----

## Main Dimensions &amp; Performance Data

h	34 mm	Height
b	52 mm	Width
$l_{max}$	6.000 mm	Length maximum
$I_y$	138.624 mm <sup>4</sup>	Second moment of area
$I_z$	113.037 mm <sup>4</sup>	Second moment of area
LF Q	1.170 mm <sup>2</sup>	Cross-sectional area
$W_y$	5.878 mm <sup>3</sup>	Wider resistance torque
$W_z$	6.350 mm <sup>3</sup>	Wider resistance torque

## Mounting dimensions

$N_1$	11 mm	Bore diameter
$N_3$	19 mm	Bore diameter





### Dimensions

a <sub>2</sub>	42 mm	Distance
a <sub>L max</sub>	235 mm	Distance
a <sub>L min</sub>	17 mm	Distance
a <sub>R max</sub>	235 mm	Distance
a <sub>R min</sub>	17 mm	Distance
b <sub>1</sub>	40 mm	Width
d <sub>LW</sub>	10 mm	Diameter
e <sub>Z</sub>	17,8 mm	Distance
h <sub>1</sub>	21 mm	Height
h <sub>4</sub>	25,1 mm	Height
j <sub>L</sub>	250 mm	Increment