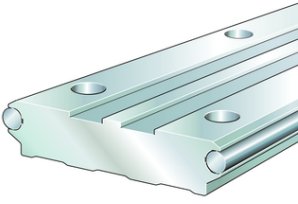


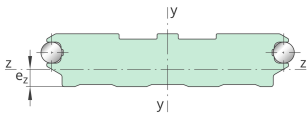
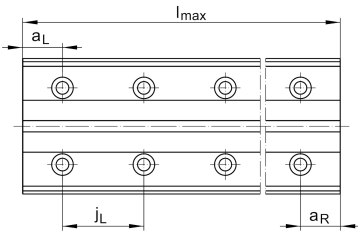
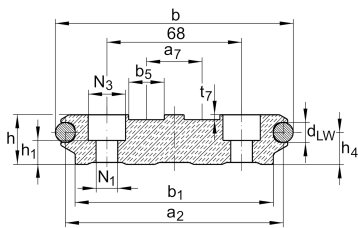
**LFS120-E**

Guideway

solid profile, fixing hole spacing half of standard, with two raceway shafts; corrosion-resistant design possible



Technical information



Your current product variant

Size Code	120	
Locationing guideway	E	Fixing hole spacing half of standard

Main Dimensions & Performance Data

h	25 mm	Height
b	120 mm	Width
l_{max}	8.000 mm	Length maximum
I_y	2.330.980 mm ⁴	Second moment of area
I_z	9.365 mm ⁴	Second moment of area
LF Q	2.468 mm ²	Cross-sectional area
W_y	40.751 mm ³	Wider resistance torque
W_z	117.074 mm ³	Wider resistance torque

Mounting dimensions

N ₁	11 mm	Bore diameter
N ₃	19 mm	Bore diameter



Dimensions

a ₂	110 mm	Distance
a ₇	28 mm	Distance
a _{L max}	110 mm	Distance
a _{L min}	17 mm	Distance
a _{R max}	110 mm	Distance
a _{R min}	17 mm	Distance
b ₁	100 mm	Width
b ₅	18 mm	Width
d _{LW}	10 mm	Diameter
e _Z	12,5 mm	Distance
h ₁	12 mm	Height
h ₄	16,1 mm	Height
j _L	125 mm	Increment
t ₇	2,5 mm	Depth