**LFS52-E**

Guideway

solid profile, fixing hole spacing half of standard, with two raceway shafts; corrosion-resistant design possible

Technical information

Your current product variant

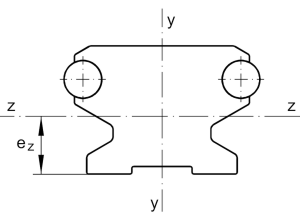
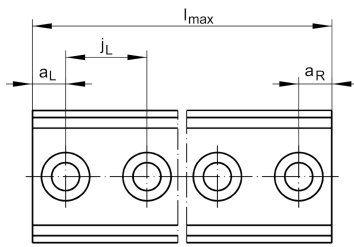
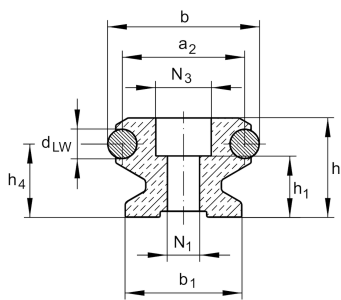
| | | |
|-------------------|----|--------------------------------------|
| Size Code | 52 | |
| Location guideway | E | Fixing hole spacing half of standard |

Main Dimensions & Performance Data

| | | |
|-----------------|-------------------------|-------------------------|
| h | 34 mm | Height |
| b | 52 mm | Width |
| l_{max} | 6.000 mm | Length maximum |
| I_y | 138.624 mm ⁴ | Second moment of area |
| I_z | 113.037 mm ⁴ | Second moment of area |
| LF _Q | 1.170 mm ² | Cross-sectional area |
| W_y | 5.878 mm ³ | Wider resistance torque |
| W_z | 6.350 mm ³ | Wider resistance torque |

Mounting dimensions

| | | |
|-------|-------|---------------|
| N_1 | 11 mm | Bore diameter |
| N_3 | 19 mm | Bore diameter |





Dimensions

| | | |
|--------------------|---------|-----------|
| a ₂ | 42 mm | Distance |
| a _{L max} | 110 mm | Distance |
| a _{L min} | 17 mm | Distance |
| a _{R max} | 110 mm | Distance |
| a _{R min} | 17 mm | Distance |
| b ₁ | 40 mm | Width |
| d _{LW} | 10 mm | Diameter |
| e _Z | 17,8 mm | Distance |
| h ₁ | 21 mm | Height |
| h ₄ | 25,1 mm | Height |
| j _L | 125 mm | Increment |