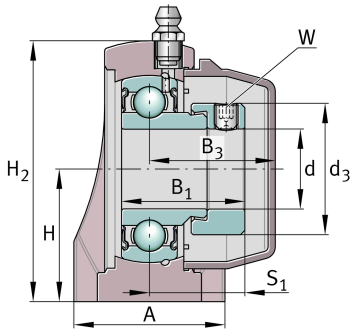
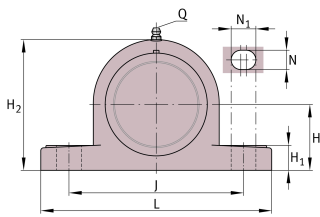


**RASE20-TV-VA-FD**

Plummer block housing unit

Plummer block housing units, FD design

Technical information



Your current product variant

Special material	TV	Plastic housing
Corrosion resistant bearing	VA	Corrosion-resistant VA design
Material	TV-FD	Plastic for food industry

Main Dimensions & Performance Data

d	20 mm	Bore diameter
L	127 mm	Length
H ₂	65,5 mm	Height
≈m	0,3 kg	Weight

Mounting dimensions

J	95 mm	Distance fixing bore
N	11 mm	Width (slot)
N ₁	14 mm	Length (slot)
W	3 mm	Width of flats



Dimensions

H	33,3 mm	Distance shaft axis
A	38 mm	Width (base)
H ₁	14,2 mm	Height (base)
B ₁	31 mm	Locking collar total width
B ₃	31,65 mm	Distance housing centre to cap end
S ₁	24,1 mm	Distance raceway to locking collar
Q	1/4"-28 UNF	Connection thread for lubrication
d ₃	33,3 mm	Outside diameter eccentric locking collar

Additional information

GEH.ASE04-TV-WHT	Housing
GE20-KRR-B-FA107-VA-FD	Bearing designation
KASK04-S-G-WHT	End cap

Temperature range

T _{min}	-30 °C	Operating temperature min.
T _{max}	100 °C	Operating temperature max.