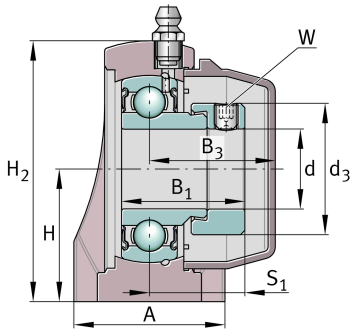
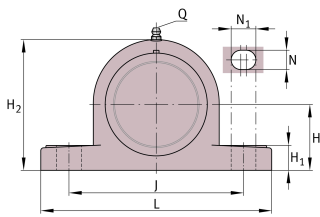


**RASE25-TV-VA-FD**

Plummer block housing unit

Plummer block housing units, FD design

Technical information

**Your current product variant**

Special material	TV	Plastic housing
Corrosion resistant bearing	VA	Corrosion-resistant VA design
Material	TV-FD	Plastic for food industry

Main Dimensions & Performance Data

d	25 mm	Bore diameter
L	140 mm	Length
H 2	71 mm	Height
≈m	0,35 kg	Weight

Mounting dimensions

J	105 mm	Distance fixing bore
N	11 mm	Width (slot)
N 1	14 mm	Length (slot)
W	3 mm	Width of flats



Dimensions

H	36,5 mm	Distance shaft axis
A	38 mm	Width (base)
H ₁	14,5 mm	Height (base)
B ₁	31 mm	Locking collar total width
B ₃	34,05 mm	Distance housing centre to cap end
S ₁	23,5 mm	Distance raceway to locking collar
Q	1/4"-28 UNF	Connection thread for lubrication
d ₃	38,1 mm	Outside diameter eccentric locking collar

Additional information

GEH.ASE05-TV-WHT	Housing
GE25-KRR-B-FA107-VA-FD	Bearing designation
KASK05-S-G-WHT	End cap
KASK05-S-R-NBR-WHT	Open protecting cap

Temperature range

T _{min}	-30 °C	Operating temperature min.
T _{max}	100 °C	Operating temperature max.