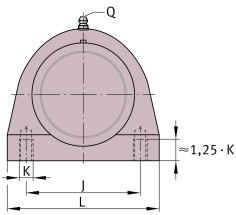


**RSHE35-TV-VA-FD**

Plummer block housing unit

Plummer block housing units, FD design

## Technical information

**Your current product variant**

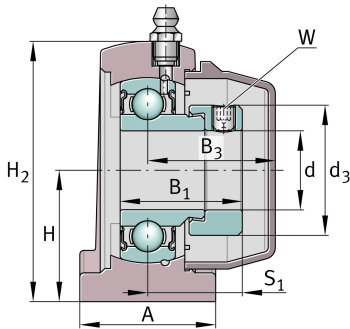
|                             |       |                               |
|-----------------------------|-------|-------------------------------|
| Special material            | TV    | Plastic housing               |
| Corrosion resistant bearing | VA    | Corrosion-resistant VA design |
| Material                    | TV-FD | Plastic for food industry     |

**Main Dimensions & Performance Data**

|                |         |               |
|----------------|---------|---------------|
| d              | 35 mm   | Bore diameter |
| L              | 110 mm  | Length        |
| H <sub>2</sub> | 95 mm   | Height        |
| ≈m             | 0,79 kg | Weight        |

**Mounting dimensions**

|   |         |                      |
|---|---------|----------------------|
| J | 82,6 mm | Distance fixing bore |
| K | M10     | Thread fixing bore   |
| W | 3 mm    | Width of flats       |





### Dimensions

|                |             |   |
|----------------|-------------|---|
| H              | 47,6 mm     | Distance shaft axis                       |
| A              | 47,5 mm     | Width (base)                              |
| B <sub>1</sub> | 38,9 mm     | Locking collar total width                |
| B <sub>3</sub> | 45,05 mm    | Distance housing centre to cap end        |
| S <sub>1</sub> | 30,4 mm     | Distance raceway to locking collar        |
| Q              | 1/4"-28 UNF | Connection thread for lubrication         |
| d <sub>3</sub> | 55,6 mm     | Outside diameter eccentric locking collar |

### Additional information

|                        |                     |
|------------------------|---------------------|
| GEH.SHE07-TV-WHT       | Housing             |
| GE35-KRR-B-FA107-VA-FD | Bearing designation |
| KASK07-S-G-WHT         | End cap             |
| KASK07-S-R-NBR-WHT     | Open protecting cap |

### Temperature range

|                  |        |                            |
|------------------|--------|----------------------------|
| T <sub>min</sub> | -30 °C | Operating temperature min. |
| T <sub>max</sub> | 100 °C | Operating temperature max. |