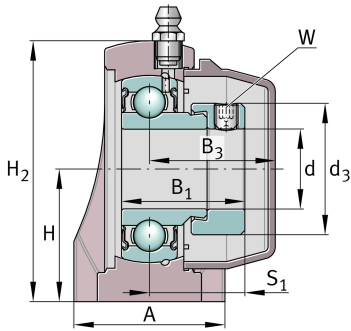
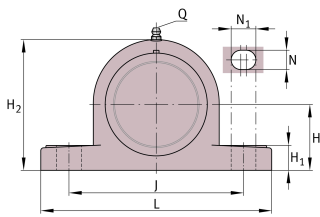


**RASE30-TV-VA-FD**

Plummer block housing unit

Plummer block housing units, FD design

## Technical information



## Your current product variant

Special material	TV	Plastic housing
Corrosion resistant bearing	VA	Corrosion-resistant VA design
Material	TV-FD	Plastic for food industry

## Main Dimensions &amp; Performance Data

d	30 mm	Bore diameter
L	162 mm	Length
H <sub>2</sub>	83 mm	Height
≈m	0,55 kg	Weight

## Mounting dimensions

J	119 mm	Distance fixing bore
N	14 mm	Width (slot)
N <sub>1</sub>	18 mm	Length (slot)
W	3 mm	Width of flats



### Dimensions

H	42,9 mm	Distance shaft axis
A	46 mm	Width (base)
H <sub>1</sub>	17,8 mm	Height (base)
B <sub>1</sub>	35,7 mm	Locking collar total width
B <sub>3</sub>	39,95 mm	Distance housing centre to cap end
S <sub>1</sub>	27,7 mm	Distance raceway to locking collar
Q	1/4"-28 UNF	Connection thread for lubrication
d <sub>3</sub>	44,5 mm	Outside diameter eccentric locking collar

### Additional information

GEH.ASE06-TV-WHT	Housing
GE30-KRR-B-FA107-VA-FD	Bearing designation
KASK06-S-G-WHT	End cap
KASK06-S-R-NBR-WHT	Open protecting cap

### Temperature range

T <sub>min</sub>	-30 °C	Operating temperature min.
T <sub>max</sub>	100 °C	Operating temperature max.