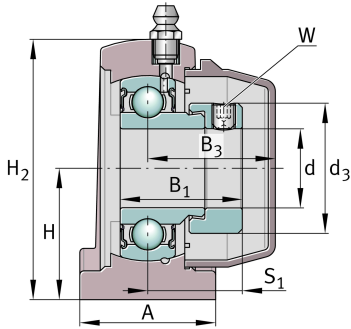
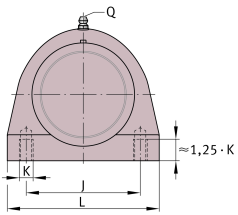


**RSHE25-TV-VA-FD**

Plummer block housing unit

Plummer block housing units, FD design

## Technical information

**Your current product variant**

Special material	TV	Plastic housing
Corrosion resistant bearing	VA	Corrosion-resistant VA design
Material	TV-FD	Plastic for food industry

**Main Dimensions & Performance Data**

d	25 mm	Bore diameter
L	76,2 mm	Length
H 2	73,5 mm	Height
≈m	0,35 kg	Weight

**Mounting dimensions**

J	50,8 mm	Distance fixing bore
K	M10	Thread fixing bore
W	3 mm	Width of flats



### Dimensions

H	36,5 mm	Distance shaft axis
A	39,5 mm	Width (base)
B <sub>1</sub>	31 mm	Locking collar total width
B <sub>3</sub>	35,05 mm	Distance housing centre to cap end
S <sub>1</sub>	23,5 mm	Distance raceway to locking collar
Q	1/4"-28 UNF	Connection thread for lubrication
d <sub>3</sub>	38,1 mm	Outside diameter eccentric locking collar

### Additional information

GEH.SHE05-TV-WHT	Housing
GE25-KRR-B-FA107-VA-FD	Bearing designation
KASK05-S-G-WHT	End cap
KASK05-S-R-NBR-WHT	Open protecting cap

### Temperature range

T <sub>min</sub>	-30 °C	Operating temperature min.
T <sub>max</sub>	100 °C	Operating temperature max.