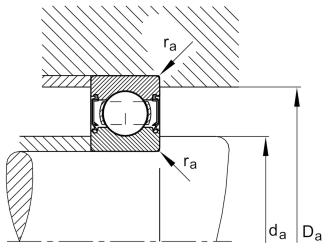
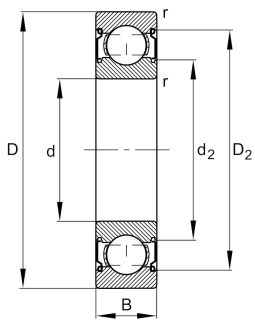


**FAG****HC6206-C-2Z-L207-C3>V**

Deep groove ball bearing

Deep groove ball bearing HC62...-C-2Z,
Hybrid bearing, single row, Generation C,
shields, steel sheet metal cage

Technical information



Your current product variant

Version code	>V	Not marked on bearing
Material Bearing	HC	Hybrid bearing, rolling elements ceramic, bearing rings made of steel
Changed internal design	C	GenerationC
Sealing	2Z	Non-contact shield on both sides
Cage	JN	Steel sheet metal
Tolerance class	P6	Class 6 (ISO 492:2023)
Dimensional / heat stabilization	SN	Rings dimensional stabilized up to 120°
Lubricant	L207	Low noise high-temperature grease, interchangeable with grease L069
Radial internal clearance	C3 (Group 3)	Internal clearance larger than CN
Bore type	Z	Cylindrical



Main Dimensions & Performance Data

d	30 mm	Bore diameter
D	62 mm	Outside diameter
B	16 mm	Width
C _r	22.000 N	Basic dynamic load rating, radial
C _{0r}	10.800 N	Basic static load rating, radial
C _{ur}	560 N	Fatigue load limit, radial
n _G	18.200 1/min	Limiting speed
n _{gr}	13.400 1/min	Reference speed
m	0,172 kg	Weight

Mounting dimensions

d _{a min}	35,6 mm	Minimum diameter shaft shoulder
D _{a max}	56,4 mm	Maximum diameter of housing shoulder
r _{a max}	1 mm	Maximum fillet radius

Dimensions

r _{min}	1 mm	Minimum chamfer dimension
D ₁	52,67 mm	Shoulder diameter outer ring
D ₂	54,91 mm	Caliber diameter outer ring
d ₁	39,33 mm	Shoulder diameter inner ring
d ₂	37,72 mm	Caliber diameter inner ring

Temperature range



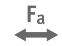




T _{min}	-30 °C	Operating temperature min.
T _{max}	120 °C	Operating temperature max.

Calculation factors

f ₀	13,2	Calculation factor
----------------	------	--------------------



Characteristics

-  Radial load
-  Axial load in one direction
-  Axial load in two directions
-  Lifetime lubrication, freedom from maintenance
-  Grease Lubrication
-  Sealed on both sides
-  Current insulated