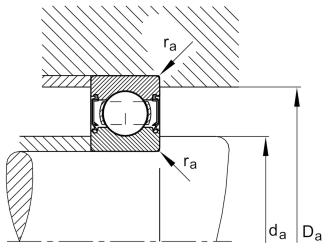
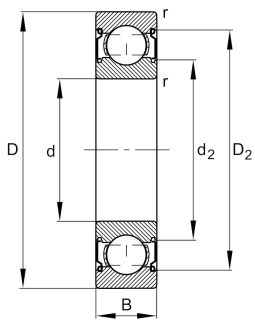


**FAG****HC6205-C-2Z-L207-C3>V**

Deep groove ball bearing

Deep groove ball bearing HC62...-C-2Z,  
Hybrid bearing, single row, Generation C,  
shields, steel sheet metal cage

## Technical information

**Your current product variant**

Version code	>V	Not marked on bearing
Material Bearing	HC	Hybrid bearing, rolling elements ceramic, bearing rings made of steel
Changed internal design	C	GenerationC
Type of Seal	2Z	Non-contact shield on both sides
Cage	JN	Steel sheet metal
Tolerance class	P6	Class6 (P6), better than PN
Dimensional / heat stabilization	SN	Rings dimensional stabilized up to 120°
Lubricant	L207	Low noise high-temperature grease, interchangeable with grease L069
Radial internal clearance	C3 (Group 3)	Internal clearance larger than CN
Bore type	Z	Cylindrical



### Main Dimensions & Performance Data

d	25 mm	Bore diameter
D	52 mm	Outside diameter
B	15 mm	Width
C <sub>r</sub>	15.900 N	Basic dynamic load rating, radial
C <sub>0r</sub>	7.500 N	Basic static load rating, radial
C <sub>ur</sub>	385 N	Fatigue load limit, radial
n <sub>G</sub>	22.000 1/min	Limiting speed
n <sub>gr</sub>	16.000 1/min	Reference speed
m	0,114 kg	Weight

### Mounting dimensions

d <sub>a min</sub>	30,6 mm	Minimum diameter shaft shoulder
D <sub>a max</sub>	46,4 mm	Maximum diameter of housing shoulder
r <sub>a max</sub>	1 mm	Maximum fillet radius

### Dimensions

r <sub>min</sub>	1 mm	Minimum chamfer dimension
D <sub>1</sub>	44,06 mm	Shoulder diameter outer ring
D <sub>2</sub>	46,01 mm	Caliber diameter outer ring
d <sub>1</sub>	32,94 mm	Shoulder diameter inner ring
d <sub>2</sub>	31,61 mm	Caliber diameter inner ring

### Temperature range

T <sub>min</sub>	-30 °C	Operating temperature min.
T <sub>max</sub>	120 °C	Operating temperature max.



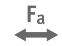




### Calculation factors

f <sub>0</sub>	13,2	Calculation factor
----------------	------	--------------------



### Characteristics

---

-  Radial load
-  Axial load in one direction
-  Axial load in two directions
-  Lifetime lubrication, freedom from maintenance
-  Grease Lubrication
-  Sealed on both sides
-  Current insulated