

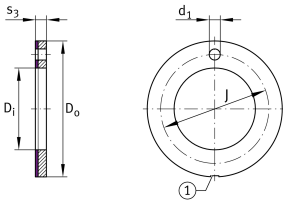


EGW10-E40 [↗](#)

Thrust washer

Thrust washer, maintenance-free, material in accordance with ISO 3547-4, with steel backing

Technical information



Your current product variant

Maintenance	Maintenance free	
Material sliding Layer	E40	Maintenance-free sliding layer E40
Material back	Steel	

Main Dimensions & Performance Data

D_i	10 mm	Inner diameter
s_3	1,5 mm	Wall thickness
C_a	33.000 N	Basic dynamic load rating, axial
C_{0a}	58.900 N	Basic static load rating, axial
D_o	20 mm	Outer Diameter
$\approx m$	2,774 g	Weight






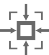
Dimensions

t_a	1 mm	Mounting dimension
d_{6a}	20 mm	Mounting dimension d_{6a}
D_{oUT}	-0,25 mm	Outside diameter, lower tolerance
D_{iOT}	0,25 mm	Inner diameter, upper tolerance
D_{iUT}	0 mm	Inner diameter, lower tolerance
D_{oOT}	0 mm	Outside diameter, upper tolerance
s_{3OT}	0 mm	Wall thickness, upper tolerance
s_{3UT}	-0,05 mm	Wall thickness, lower tolerance
t_{aOT}	0,2 mm	Mounting dimension, upper tolerance
t_{aUT}	-0,2 mm	Mounting dimension, lower tolerance
d_{6aOT}	0,12 mm	Mounting dimension d_{6a} , upper tolerance
d_{6aUT}	0 mm	Mounting dimension d_{6a} , lower tolerance

Temperature range

T_{min}	-200 °C	Operating temperature min.
T_{max}	280 °C	Operating temperature max.

Characteristics

-  Axial load in one direction
-  Lifetime lubrication, freedom from maintenance
-  Not sealed
-  Small design envelope