

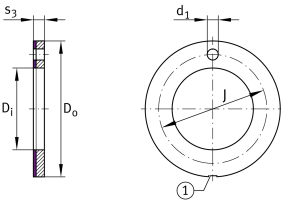
**EGW38-E40**

## Thrust washer



Thrust washer, maintenance-free, material in accordance with ISO 3547-4, with steel backing

## Technical information



## Your current product variant

Maintenance	Maintenance free
Material sliding Layer	E40 Maintenance-free sliding layer E40
Material back	Steel

## Main Dimensions &amp; Performance Data

$D_i$	38 mm	Inner diameter
$s_3$	1,5 mm	Wall thickness
$C_a$	264.000 N	Basic dynamic load rating, axial
$C_{0a}$	471.000 N	Basic static load rating, axial
$D_o$	62 mm	Outer Diameter
$\approx m$	22,05 g	Weight



### Dimensions

J	50 mm	Pitch circle
d <sub>1</sub>	4 mm	Fixing hole diameter
t <sub>a</sub>	1 mm	Mounting dimension
d <sub>6a</sub>	62 mm	Mounting dimension d <sub>6a</sub>
D <sub>o UT</sub>	-0,25 mm	Outside diameter, lower tolerance
D <sub>i OT</sub>	0,25 mm	Inner diameter, upper tolerance
D <sub>i UT</sub>	0 mm	Inner diameter, lower tolerance
D <sub>o OT</sub>	0 mm	Outside diameter, upper tolerance
s <sub>3 OT</sub>	0 mm	Wall thickness, upper tolerance
s <sub>3 UT</sub>	-0,05 mm	Wall thickness, lower tolerance
J <sub>OT</sub>	0,12 mm	Pitch circle, upper tolerance
J <sub>UT</sub>	-0,12 mm	Pitch circle, lower tolerance
d <sub>1 OT</sub>	0,4 mm	Fixing hole diameter, upper tolerance
d <sub>1 UT</sub>	0,1 mm	Fixing hole diameter, lower tolerance
t <sub>a OT</sub>	0,2 mm	Mounting dimension, upper tolerance
t <sub>a UT</sub>	-0,2 mm	Mounting dimension, lower tolerance
d <sub>6a OT</sub>	0,12 mm	Mounting dimension d <sub>6a</sub> , upper tolerance
d <sub>6a UT</sub>	0 mm	Mounting dimension d <sub>6a</sub> , lower tolerance

### Temperature range

T <sub>min</sub>	-200 °C	Operating temperature min.
T <sub>max</sub>	280 °C	Operating temperature max.



## Characteristics

---

-  Axial load in one direction
-  Lifetime lubrication, freedom from maintenance
-  Not sealed
-  Small design envelope