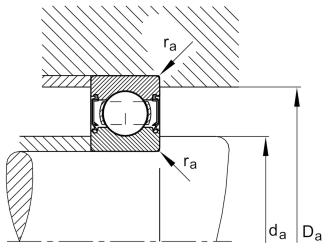
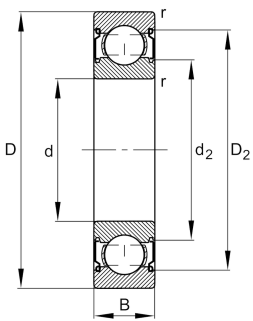


**FAG****HC6204-C-2Z-L207-C3>V**

Deep groove ball bearing

Deep groove ball bearing HC62...-C-2Z,  
Hybrid bearing, single row, Generation C,  
shields, steel sheet metal cage

## Technical information

**Your current product variant**

|                                  |              |   |
|----------------------------------|--------------|---|
| Version code                     | >V           | Not marked on bearing   |
| Material Bearing                 | HC           | Hybrid bearing, rolling elements ceramic, bearing rings made of steel |
| Changed internal design          | C            | GenerationC   |
| Type of Seal                     | 2Z           | Non-contact shield on both sides                                      |
| Cage                             | JN           | Steel sheet metal   |
| Tolerance class                  | P6           | Class6 (P6), better than PN   |
| Dimensional / heat stabilization | SN           | Rings dimensional stabilized up to 120°                               |
| Lubricant                        | L207         | Low noise high-temperature grease, interchangeable with grease L069   |
| Radial internal clearance        | C3 (Group 3) | Internal clearance larger than CN                                     |
| Bore type                        | Z            | Cylindrical   |



### Main Dimensions & Performance Data

|                 |              |                                   |
|-----------------|--------------|-----------------------------------|
| d               | 20 mm        | Bore diameter                     |
| D               | 47 mm        | Outside diameter                  |
| B               | 14 mm        | Width                             |
| C <sub>r</sub>  | 14.700 N     | Basic dynamic load rating, radial |
| C <sub>0r</sub> | 6.300 N      | Basic static load rating, radial  |
| C <sub>ur</sub> | 330 N        | Fatigue load limit, radial        |
| n <sub>G</sub>  | 24.700 1/min | Limiting speed                    |
| n <sub>gr</sub> | 18.200 1/min | Reference speed                   |
| m               | 0,096 kg     | Weight                            |

### Mounting dimensions

|                    |         |                                      |
|--------------------|---------|--------------------------------------|
| d <sub>a min</sub> | 25,6 mm | Minimum diameter shaft shoulder      |
| D <sub>a max</sub> | 41,4 mm | Maximum diameter of housing shoulder |
| r <sub>a max</sub> | 1 mm    | Maximum fillet radius                |

### Dimensions

|                  |          |                              |
|------------------|----------|------------------------------|
| r <sub>min</sub> | 1 mm     | Minimum chamfer dimension    |
| D <sub>1</sub>   | 39,06 mm | Shoulder diameter outer ring |
| D <sub>2</sub>   | 41 mm    | Caliber diameter outer ring  |
| d <sub>1</sub>   | 27,94 mm | Shoulder diameter inner ring |
| d <sub>2</sub>   | 26,77 mm | Caliber diameter inner ring  |

### Temperature range

|                  |        |                            |
|------------------|--------|----------------------------|
| T <sub>min</sub> | -30 °C | Operating temperature min. |
| T <sub>max</sub> | 120 °C | Operating temperature max. |



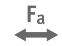




### Calculation factors

|                |      |                    |
|----------------|------|--------------------|
| f <sub>0</sub> | 12,5 | Calculation factor |
|----------------|------|--------------------|



### Characteristics

---

-  Radial load
-  Axial load in one direction
-  Axial load in two directions
-  Lifetime lubrication, freedom from maintenance
-  Grease Lubrication
-  Sealed on both sides
-  Current insulated