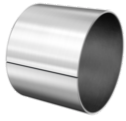


**EGB2425-E40**

Bush

Metal/polymer composite plain bush,
maintenance-free, ISO 3547, with steel
backing



Technical information

**Your current product variant**

Maintenance	Maintenance free	
Type of Sealing	Without	Not sealed
Material sliding Layer	E40	Maintenance-free sliding layer E40
Material back	Steel	

Main Dimensions & Performance Data

D_i	24 mm	Inner diameter
D_o	27 mm	Outer diameter
B	25 mm	Width
C_r	84.000 N	Basic dynamic load rating, radial
C_{0r}	150.000 N	Basic static load rating, radial
$\approx m$	21,24 g	Weight



Dimensions

f	20 °	Chamfer angle outside diameter
F _{iUT}	0,1 mm	Inner edge break, lower tolerance
F _{iOT}	0,7 mm	Inner edge break, upper tolerance
f	0,6 mm	Outer chamfer
F _{i min}	-0,1 mm	Inner edge break, min.
F _{i max}	-0,7 mm	Inner edge break, max.
D _{i OT}	0,061 mm	Inner diameter, upper tolerance
D _{o OT}	0,075 mm	Outside diameter, upper tolerance
D _{i UT}	0,001 mm	Inner diameter, lower tolerance
D _{o UT}	0,035 mm	Outside diameter, lower tolerance
s ₃	1,5 mm	Wall thickness
s _{3 OT}	0,005 mm	Wall thickness, upper tolerance
s _{3 UT}	-0,025 mm	Wall thickness, lower tolerance
B _{UT}	-0,25 mm	Width, lower tolerance
B _{OT}	0,25 mm	Width, upper tolerance
f _{OT}	0,4 mm	Outer chamfer, upper tolerance
f _{UT}	-0,4 mm	Outer chamfer, lower tolerance
F _i	0,1 mm	Inner edge break

Temperature range

T _{min}	-200 °C	Operating temperature min.
T _{max}	280 °C	Operating temperature max.



Characteristics



Radial load



Lifetime lubrication, freedom from maintenance



Not sealed



Small design envelope