

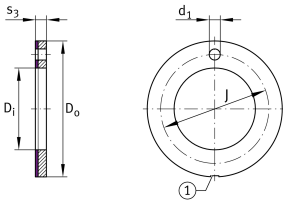
**EGW14-E40**

Thrust washer



Thrust washer, maintenance-free, material in accordance with ISO 3547-4, with steel backing

Technical information



Your current product variant

Maintenance	Maintenance free	
Material sliding Layer	E40	Maintenance-free sliding layer E40
Material back	Steel	

Main Dimensions & Performance Data

D_i	14 mm	Inner diameter
s_3	1,5 mm	Wall thickness
C_a	52.800 N	Basic dynamic load rating, axial
C_{0a}	94.200 N	Basic static load rating, axial
D_o	26 mm	Outer Diameter
$\approx m$	4,402 g	Weight



Dimensions

J	20 mm	Pitch circle
d ₁	2 mm	Fixing hole diameter
t _a	1 mm	Mounting dimension
d _{6a}	26 mm	Mounting dimension d _{6a}
D _{o UT}	-0,25 mm	Outside diameter, lower tolerance
D _{i OT}	0,25 mm	Inner diameter, upper tolerance
D _{i UT}	0 mm	Inner diameter, lower tolerance
D _{o OT}	0 mm	Outside diameter, upper tolerance
s _{3 OT}	0 mm	Wall thickness, upper tolerance
s _{3 UT}	-0,05 mm	Wall thickness, lower tolerance
J _{OT}	0,12 mm	Pitch circle, upper tolerance
J _{UT}	-0,12 mm	Pitch circle, lower tolerance
d _{1 OT}	0,4 mm	Fixing hole diameter, upper tolerance
d _{1 UT}	0,1 mm	Fixing hole diameter, lower tolerance
t _{a OT}	0,2 mm	Mounting dimension, upper tolerance
t _{a UT}	-0,2 mm	Mounting dimension, lower tolerance
d _{6a OT}	0,12 mm	Mounting dimension d _{6a} , upper tolerance
d _{6a UT}	0 mm	Mounting dimension d _{6a} , lower tolerance

Temperature range

T _{min}	-200 °C	Operating temperature min.
T _{max}	280 °C	Operating temperature max.



Characteristics

-  Axial load in one direction
-  Lifetime lubrication, freedom from maintenance
-  Not sealed
-  Small design envelope