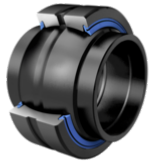


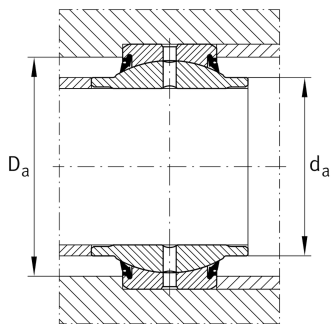
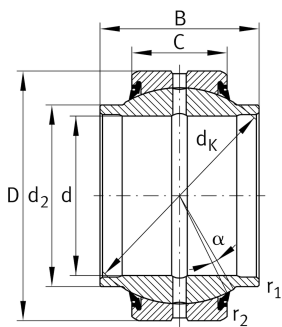
**GE50-HO-2RS-E**

## Spherical plain bearing



High performance Radial spherical plain bearing, requiring maintenance, sliding contact surface: steel/steel, cylindrical extensions on inner ring, sealed

## Technical information



## Your current product variant

Maintenance	Maintenance required	
Material	Steel	
Type of Seal	2RS	Lip seals on both sides
Radial internal clearance	CN (Group N)	Normal internal clearance
Coating	Durotect M	Inner- and outer ring coated with Durotect M (Manganese Phosphate)

## Main Dimensions &amp; Performance Data

d	50 mm	Bore diameter bearing
D	75 mm	Outside diameter bearing
B	43 mm	Width inner ring
$C_r$	157.000 N	Basic dynamic load rating, radial
$C_{0r}$	785.000 N	Basic static load rating, radial
$\approx m$	0,55 kg	Weight

## Mounting dimensions

$r_{1\text{min}}$	0,3 mm	Edge Spacing
$r_{2\text{min}}$	1 mm	Edge Spacing
$d_{a\text{max}}$	56,5 mm	Connection measure Inner ring
$D_{a\text{min}}$	63 mm	Housing Connection Diameter



### Dimensions

C	28 mm	Width Outer ring
d <sub>K</sub>	66 mm	Ball diameter
α	3 °	Tilt angle
d <sub>OT</sub>	0 mm	Bore diameter bearing, upper tolerance
d <sub>UT</sub>	-0,012 mm	Bore diameter bearing, lower tolerance
d <sub>T</sub>	0.012	Bore diameter bearing, tolerance
D <sub>OT</sub>	0 mm	Outside diameter, upper tolerance
D <sub>UT</sub>	-0,013 mm	Outside diameter, lower tolerance
B <sub>OT</sub>	0,3 mm	Width inner ring, upper tolerance
B <sub>UT</sub>	-0,3 mm	Width inner ring, lower tolerance
C <sub>OT</sub>	0 mm	Width outer ring, upper tolerance
C <sub>UT</sub>	-0,3 mm	Width outer ring, lower tolerance
G <sub>r</sub>	0,06 - 0,12	Radial Clearance
G <sub>rmax</sub>	0,12 mm	Radial clearance, maximum
G <sub>rmin</sub>	0,06 mm	Radial clearance, minimum

### Temperature range

T <sub>min</sub>	-30 °C	Operating temperature min.
T <sub>max</sub>	130 °C	Operating temperature max.



## Characteristics

---



Radial load



Axial load in one direction



Axial load in two directions



Grease Lubrication



Sealed on both sides



Static angular error and misalignment



Dynamic angular error and misalignment