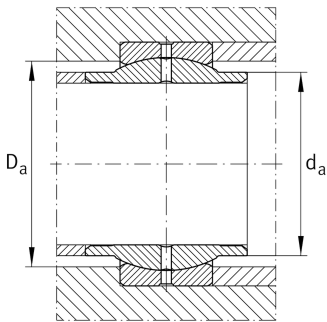
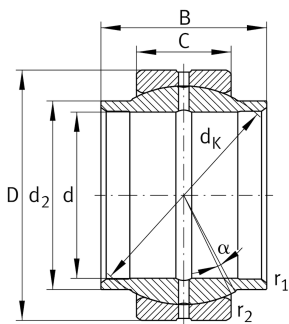


**GE12-LO-E**

Spherical plain bearing

Standard performance Radial spherical plain bearing, requiring maintenance, sliding contact surface: steel/steel, DIN ISO 12240-1, dimension series W, cylindrical extensions on inner ring, open design

Technical information

**Your current product variant**

Maintenance	Maintenance required	
Material	Steel	
Type of Sealing	Without	
Radial internal clearance	CN (Group N)	Normal internal clearance
Coating	Durotect M	Inner- and outer ring coated with Durotect M (Manganese Phosphate)

Main Dimensions & Performance Data

d	12 mm	Bore diameter bearing
D	22 mm	Outside diameter bearing
B	12 mm	Width inner ring
C_r	10.700 N	Basic dynamic load rating, radial
C_{0r}	53.600 N	Basic static load rating, radial
$\approx m$	0,017 kg	Weight

Mounting dimensions

$r_{1\text{min}}$	0,3 mm	Edge Spacing
$r_{2\text{min}}$	0,3 mm	Edge Spacing
$d_{a\text{max}}$	15,5 mm	Connection measure Inner ring
$D_{a\text{min}}$	17,5 mm	Housing Connection Diameter



Dimensions

C	7 mm	Width Outer ring
d_K	18 mm	Ball diameter
α	4 °	Tilt angle
d_{OT}	0,018 mm	Bore diameter bearing, upper tolerance
d_{UT}	0 mm	Bore diameter bearing, lower tolerance
D_{OT}	0 mm	Outside diameter, upper tolerance
D_{UT}	-0,009 mm	Outside diameter, lower tolerance
B_{OT}	0 mm	Width inner ring, upper tolerance
B_{UT}	-0,18 mm	Width inner ring, lower tolerance
C_{OT}	0 mm	Width outer ring, upper tolerance
C_{UT}	-0,24 mm	Width outer ring, lower tolerance
G_r	0,032 - 0,068	Radial Clearance
G_{rmax}	0,068 mm	Radial clearance, maximum
G_{rmin}	0,032 mm	Radial clearance, minimum

Temperature range

T_{min}	-60 °C	Operating temperature min.
T_{max}	200 °C	Operating temperature max.

Characteristics

-  Radial load
-  Axial load in one direction
-  Axial load in two directions
-  Grease Lubrication
-  Not sealed
-  Static angular error and misalignment
-  Dynamic angular error and misalignment