

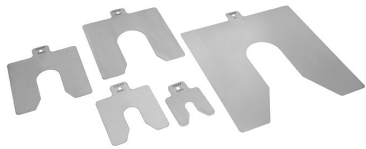
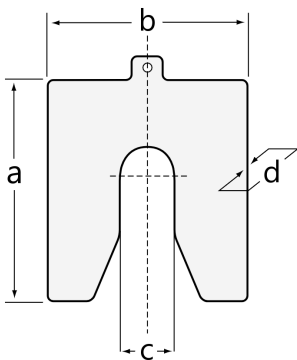


SHIMS-100-010-CP-100X100X0.10 [↗](#)

Shims

BETEX Shims C 100, for alignment of machines and machine components

Technical information



Your current product variant

| | | |
|---------|-------|------------------------|
| Series | SHIMS | Solid, stainless steel |
| Version | C 100 | Size: 100 mm × 100 mm |

Dimensions

| | | |
|----|--------|--------|
| a | 100 mm | |
| b | 100 mm | |
| c | 32 mm | |
| d | 0,1 mm | |
| ≈m | 6,6 g | Weight |

Additional information

| | |
|--|-------------------|
| 10 pieces shims, stainless steel 1.4301, solid | Package content |
| suitable for reuse, discs rounded and deburred | Product specifics |