

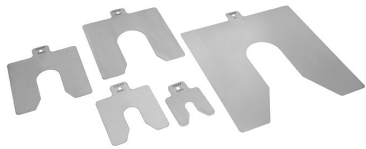
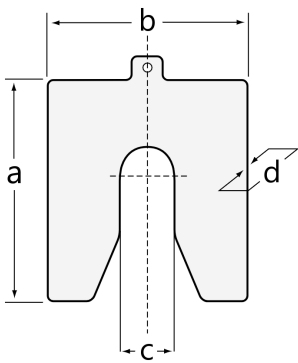


SHIMS-100-020-CR-100X100X0.20 [🔗](#)

Shims

BETEX Shims C 100, for alignment of machines and machine components

Technical information



Your current product variant

Series	SHIMS	Solid, stainless steel
Version	C 100	Size: 100 mm × 100 mm

Dimensions

a	100 mm	
b	100 mm	
c	32 mm	
d	0,2 mm	
≈m	12,8 g	Weight

Additional information

10 pieces shims, stainless steel 1.4301, solid	Package content
suitable for reuse, discs rounded and deburred	Product specifics