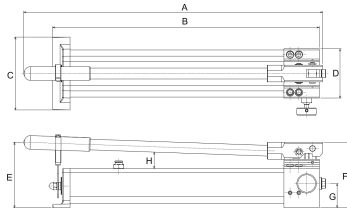


**AHP-703-SET** [↗](#)

Hydraulic pump, manual

BETEX Aluminum hand pump, two-stage,
in set with pressure gauge, T-piece, hose,
couplings and steel box

Technical information



Your current product variant

| | | |
|---------|-----|---|
| Series | AHP | Aluminum lightweight hand pump, 2-stage |
| Version | HC | For use with hydraulic cylinders |

Technical data

| | | |
|----------------|----------------------|-------------------------------|
| P max | 700 bar | Maximum operating pressure |
| P 1 | 20 bar | Operating pressure, 1st stage |
| \dot{V}_{H1} | 12,9 cm ³ | Oil flow/stroke, 1st stage |
| \dot{V}_{H2} | 2,3 cm ³ | Oil flow/stroke, 2nd stage |
| V max | 2 l | Volume of oil container |
| V eff | 1,62 l | Useable oil quantity |
| | single-acting | Cylinder compatibility |
| | 3/8" NPT | Hose connection pump body |
| | 623 mm | Length pump |
| | 150 mm | Width pump |
| | 135 mm | Height pump |
| | 6,3 kg | Weight pump |
| | 761 x 264 x 244 | Dimensions steel case (mm) |
| ≈m | 18,1 kg | Weight |



Dimensions

| | |
|---|--------|
| A | 623 mm |
| B | 556 mm |
| C | 150 mm |
| D | 102 mm |
| E | 135 mm |
| F | 135 mm |
| G | 50 mm |
| H | 37 mm |

Additional information

preferably in combination with hydraulic cylinders and hydraulic pullers HXP

Use