

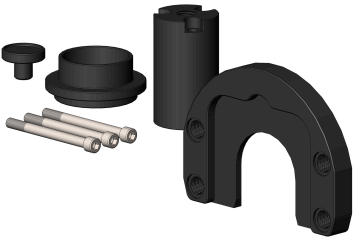
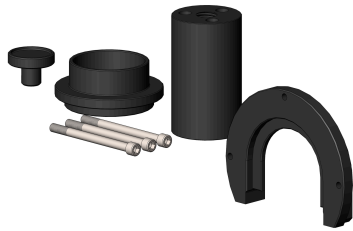


BPPS-100T-SOLENOID-VALVE [↗](#)

Mobile hydraulic device

BETEX device for mounting/dismounting of tapered or cylindrical roller bearing units in wheelset bearings of rail vehicles, with solenoid valve, proceed way lateral

Technical information



Your current product variant

Series	BPP/BPPS	BEARING PULLER/PUSHER
--------	----------	-----------------------

Technical data

U	230 V	Voltage
	AC power	Current type
I	12 A	Amperage
f	50 – 60 Hz	Power frequency
F _{c max}	980 kN	Max. contact force cylinder
s _{c max}	255 mm	Max. working stroke cylinder
P _{max}	700 bar	Max. operating pressure
	384 – 731	Working height range [bottom – center axis cylinder] (mm)
	1299 x 627 x 909	Dimensions [LxWxH] (mm)
≈m	400 kg	Weight

Functions

electrically driven hydraulic unit for function main cylinder and height adjustment, remote control	Functional principle
hydraulically by means of aggregate	Height adjustment
4 swivel castors with brake function	Castors



Additional information

Product is manufactured to order. Request with specification of the application case to customer service.

Availability

only in conjunction with bearing/ application-specific tool set (not included in delivery, separate on request)

Usability